

Beyond Checking the Box: Examining Best Practices for Sexual Assault Prevention



► Introduction

EverFi Literature Review

A Model for “Best Practice”

Examining Key Findings

Next Steps

Discussion

A Case Study on Bullying Prevention



No bullying program
Some programming on
equity/respect

ADULT MENTORS

- Every student had an adult mentor
- Mentors modeled healthy behaviors
- Students felt everyone would step up



Bystander intervention
program focused on
preventing bullying

GANG VIOLENCE

- Presence of gangs in the school
- Students don't intervene because they didn't know who is in a gang

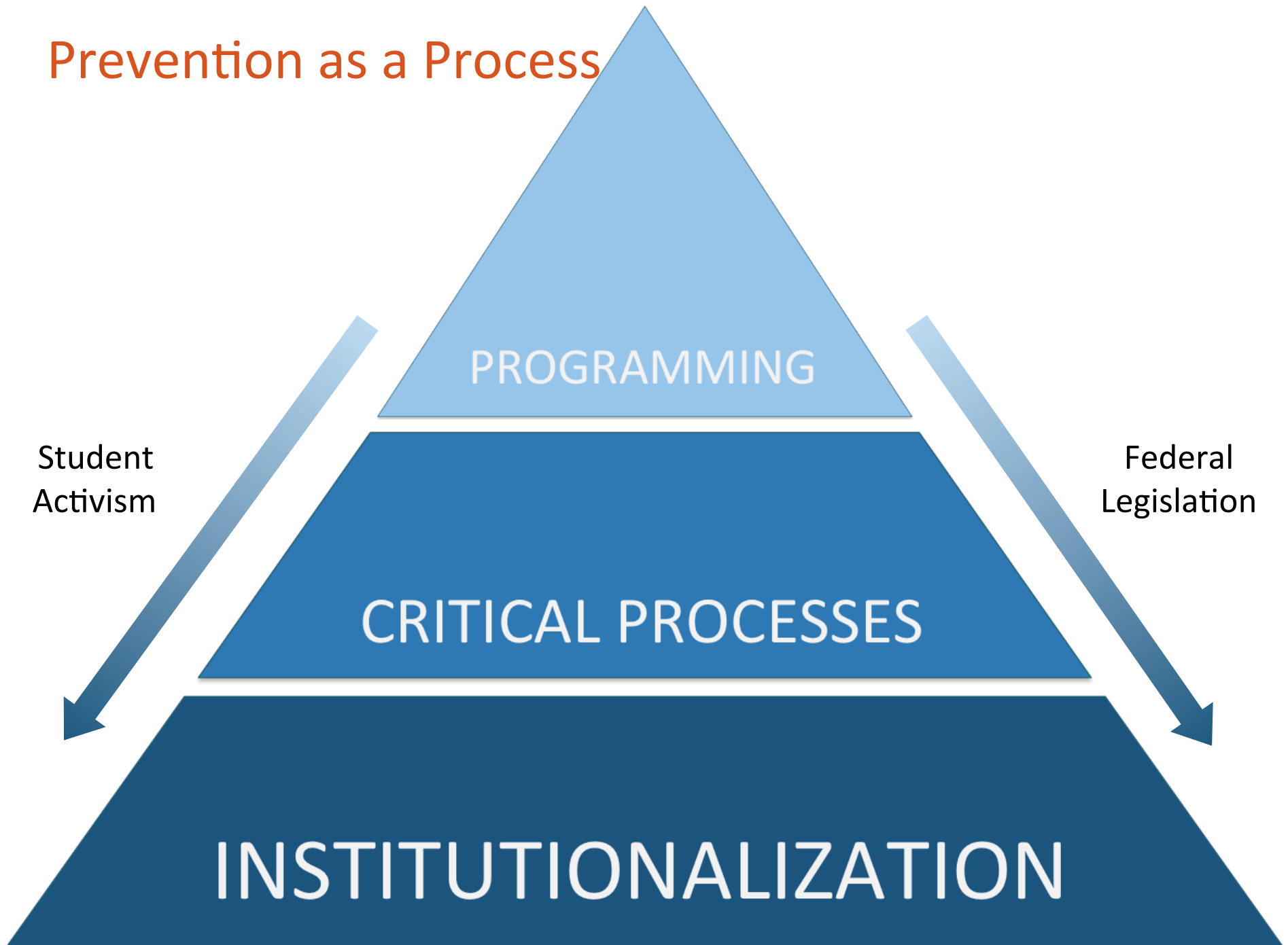


Ongoing bullying programs
focused on BI, building
relationships, and respect

NO TOLERANCE POLICY

- Students said policy negated work
- Involvement results in suspension
- Wasn't safe to stick your neck out

Prevention as a Process



Introduction

▶ EverFi Literature Review

A Model for “Best Practice”

Examining Key Findings

Next Steps

Discussion

Literature Review Process



Search Terms

- Campus, college, sexual assault, sexual violence, violence prevention, prevention, primary prevention, guidelines, standards, recommendations, evidence, effective, theory, research, education, community



Inclusion Criteria

- Publications focusing on elements of effective prevention
- Publications offering guidelines, suggestions, recommendations, standards



About the Literature

- Not necessarily specific to higher education
- Not necessarily peer-reviewed
- Not necessarily linked to quantifiable outcomes
- Prevention versus response

Overview of Literature



- Type
 - Articles from peer-reviewed journals
 - Publications and reports from national organizations
 - Publications and reports from state coalitions
- Years
 - Range from 2004-2014
 - >50% from 2010-present

- 26 theories and frameworks cited
- 315 recommendations pulled from literature
- Collapsed into 22 categories and 117 recommendations

Theories and Frameworks

SOCIAL LEARNING THEORY **FEMINIST THEORY** DYNAMIC SYSTEMS

SPECTRUM OF PREVENTION SOCIOBIOLOGICAL APPROACH **HEALTH BELIEF MODEL**

INFORMATION PROCESSING THEORY **THEORY OF BEHAVIORAL CHANGE**

COMMUNITY READINESS THEORY OF PLANNED BEHAVIOR **SOCIAL NORMS**

SOCIAL ECOLOGICAL MODEL

DIFFUSION OF INNOVATION LIFESPAN OF A SOCIAL MOVEMENT ETIOLOGICAL THEORY

SOCIAL MARKETING COMMUNITY MOBILIZATION **THEORY OF REASONED ACTION**

ANTI-OPPRESSION FRAMEWORK THEORY OF COLLECTIVE BEHAVIOR

THEORY OF SOCIAL CHANGE **PUBLIC HEALTH APPROACH** **HEALTH PROMOTION**

COGNITIVE-BEHAVIORAL THEORY **TRANSTHEORETICAL MODEL**

Introduction

EverFi Literature Review

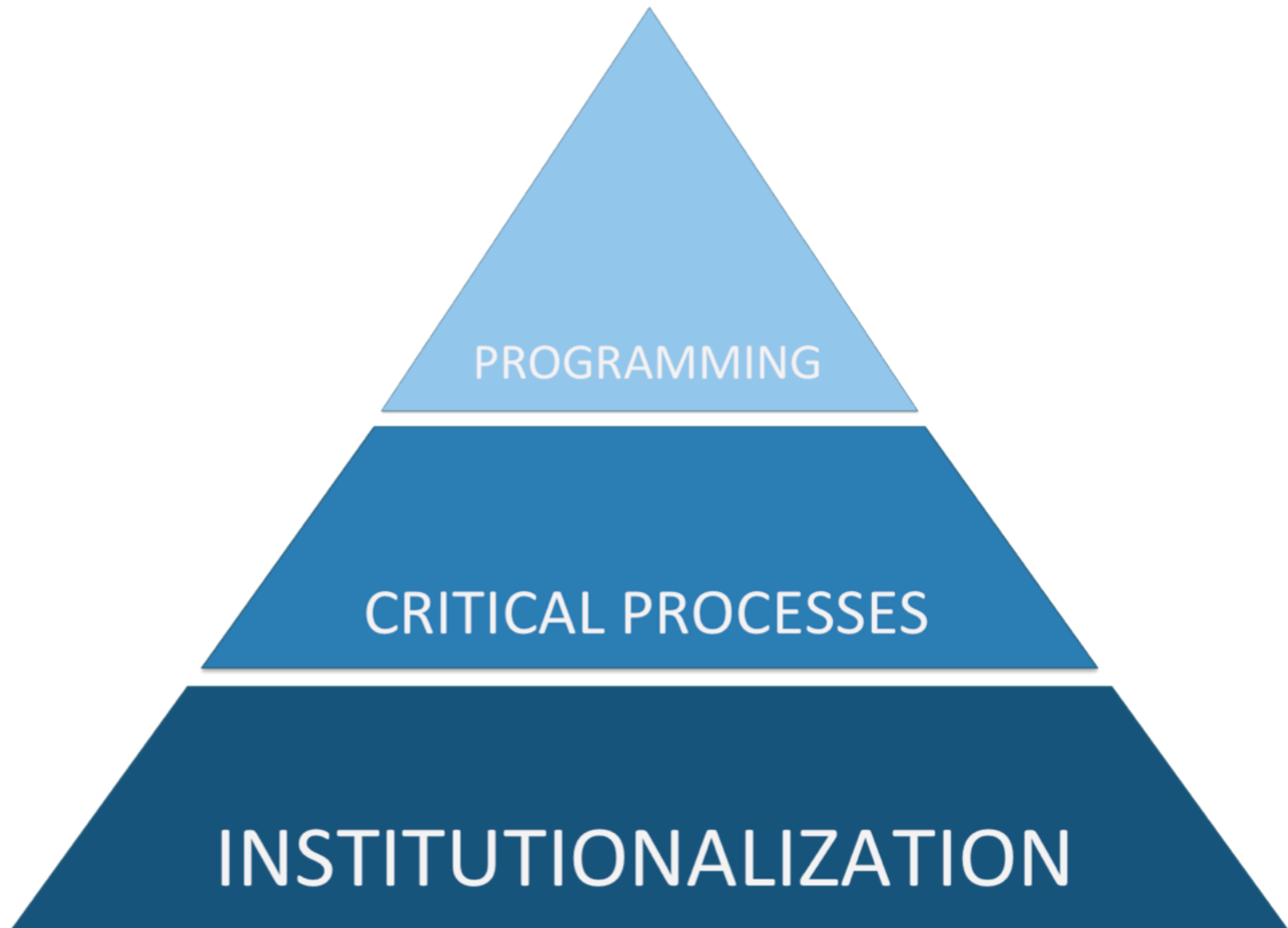
▶ A Model for “Best Practice”

Examining Key Findings

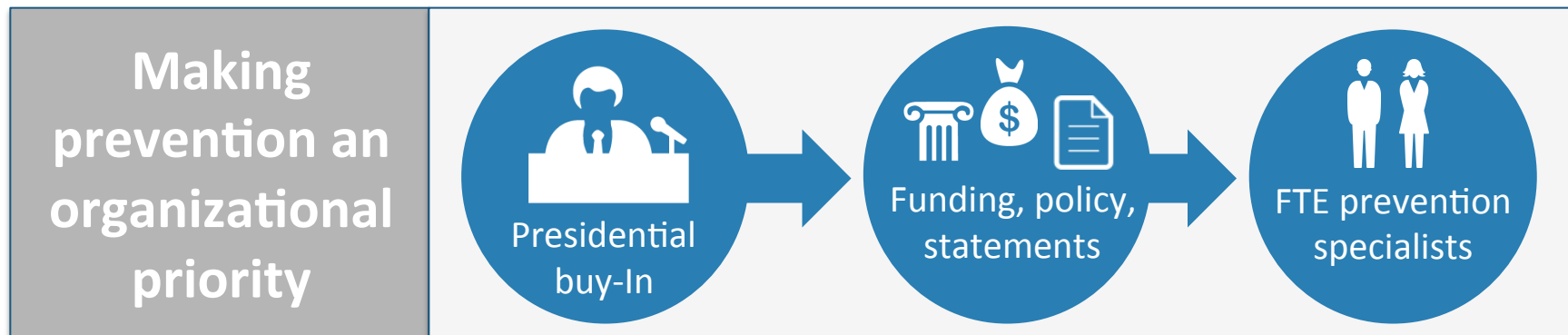
Next Steps

Discussion

Development Process

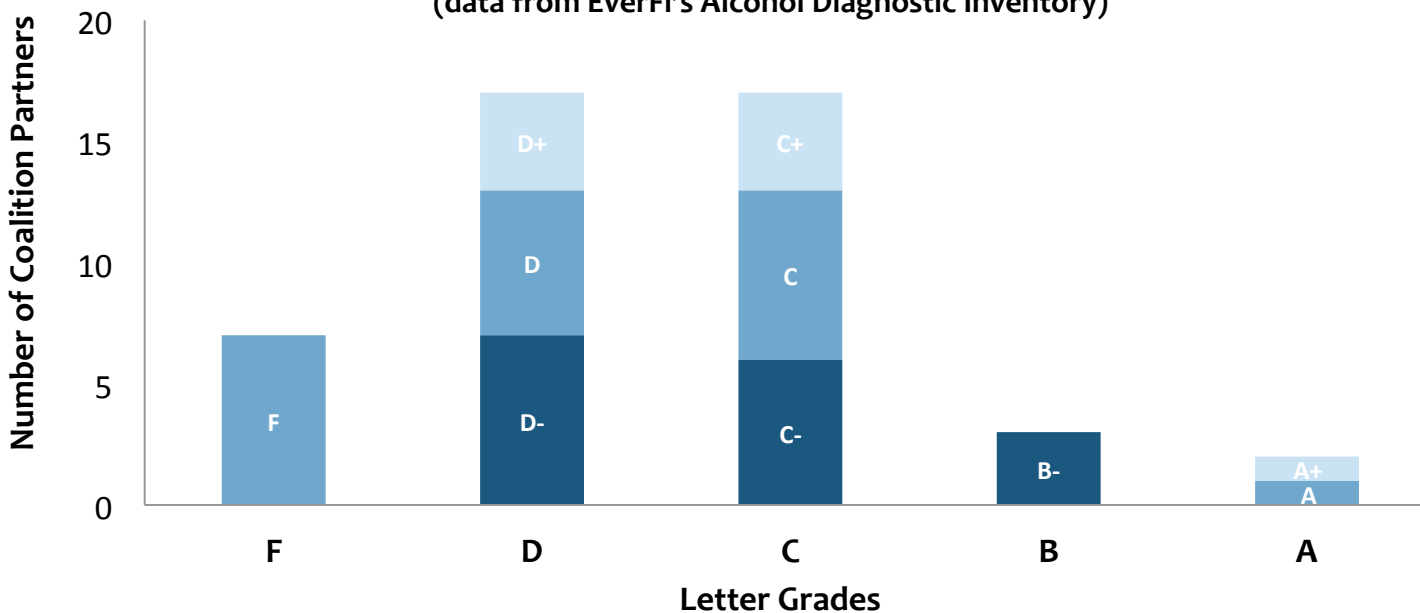


Institutionalization

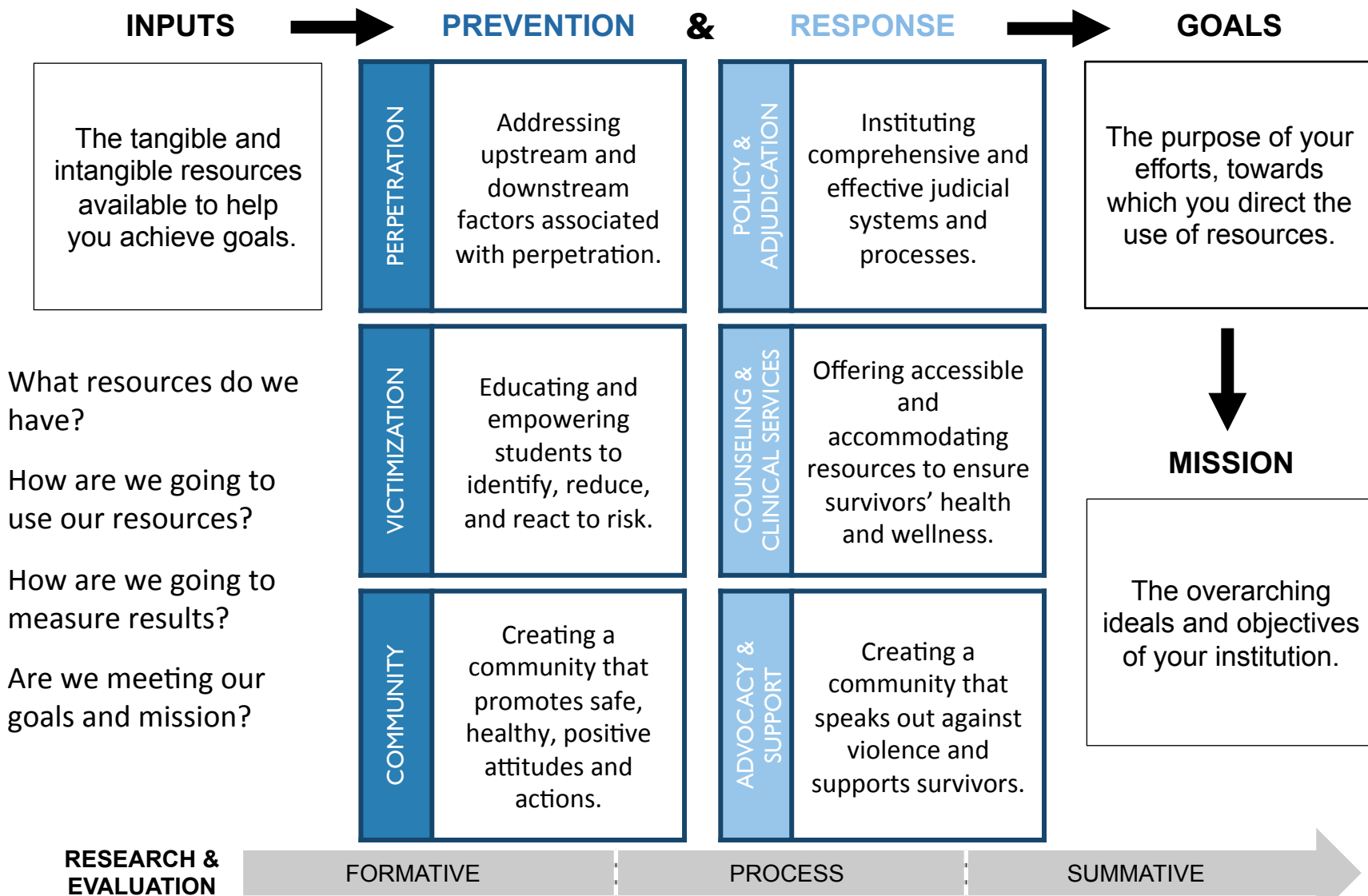


Distribution of Institutionalization Letter Grades

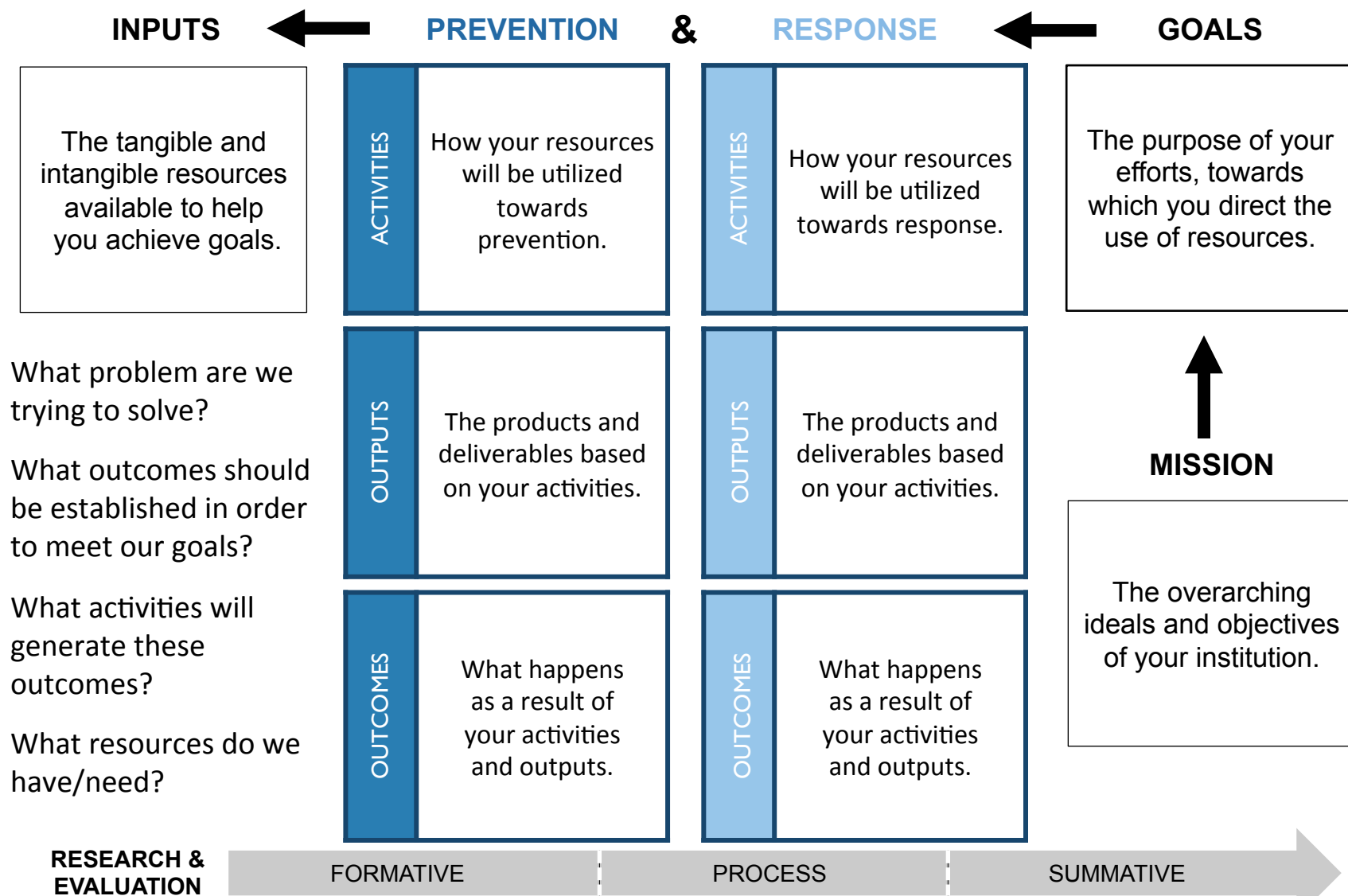
(data from EverFi's Alcohol Diagnostic Inventory)



Critical Processes



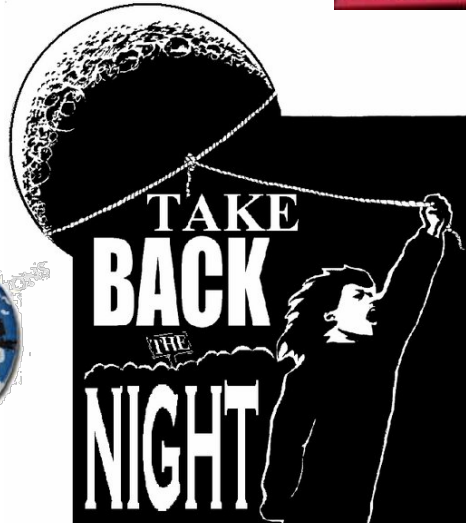
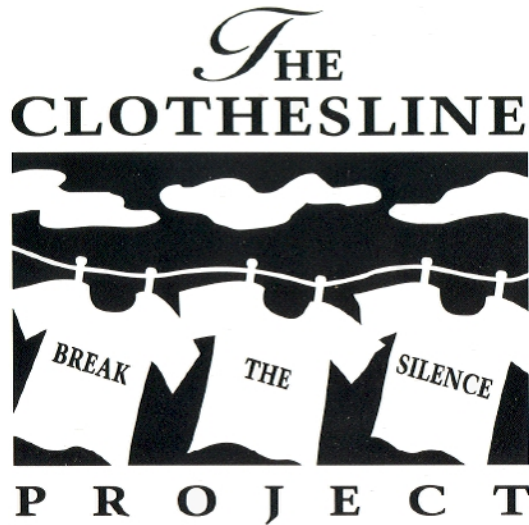
Critical Processes



Programming

White Ribbon Campaign

working to end violence against women

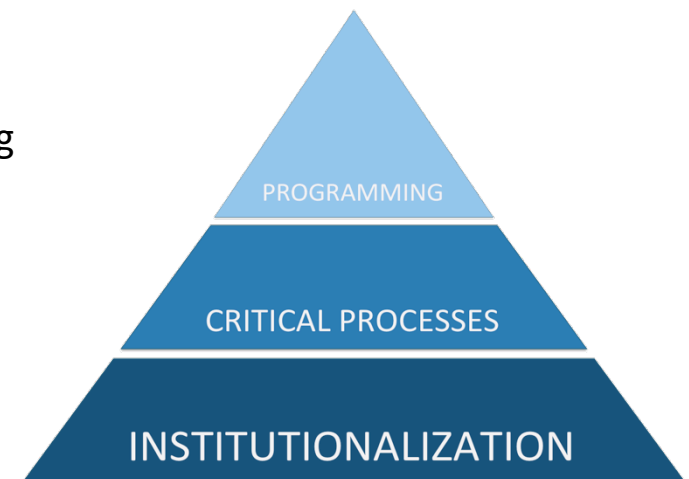


The Model Expanded

Programming	
WHAT	HOW
Approach to prevention	Targeted and adaptive
Focus on the positive	Community-wide
Definitions and statistics	Theory- and evidence-based
Sociocultural contributors	Sensitive
Risk and protective factors	Comprehensive, multifaceted, and engaging
Consent	Modeling and leadership
Skill-based education	

Critical Processes
Mandates and policies
Access to information
Recruitment, training, and support of staff
Partnerships and collaboration
Program planning
Research and evaluation

Institutionalization
System-wide buy-in
Infrastructure
Staff



Examining the Distribution of Findings

Based on number of recommendations	
Targeted and adaptive	44
Comprehensive, multifaceted, engaging	35
Partnerships and collaboration	26
Research and evaluation	25
Recruitment, training, support of staff	19
System-wide buy-in	19
Policies and mandates	19
Community-wide	16
Approach to prevention	16
Theory- and evidence-based	14
Focus on the positive	14
Sociocultural contributors	14
Skill-based education	12
Risk and protective factors	10
Access to information	8
Modeling and leadership	7
Sensitive	5
Definitions and statistics	4
Consent	4
Program planning	4
Infrastructure	2
Staff	2

Based on number of articles	
Targeted and adaptive	16
Partnerships and collaboration	16
Comprehensive, multifaceted, engaging	13
Research and evaluation	13
Community-wide	13
Recruitment, training, support of staff	12
Theory- and evidence-based	12
System-wide buy-in	11
Policies and mandates	10
Focus on the positive	10
Skill-based education	10
Approach to prevention	9
Sociocultural contributors	9
Risk and protective factors	8
Access to information	6
Modeling and leadership	5
Sensitive	4
Definitions and statistics	3
Consent	3
Program planning	3
Infrastructure	2
Staff	2

Introduction

EverFi Literature Review

A Model for “Best Practice”

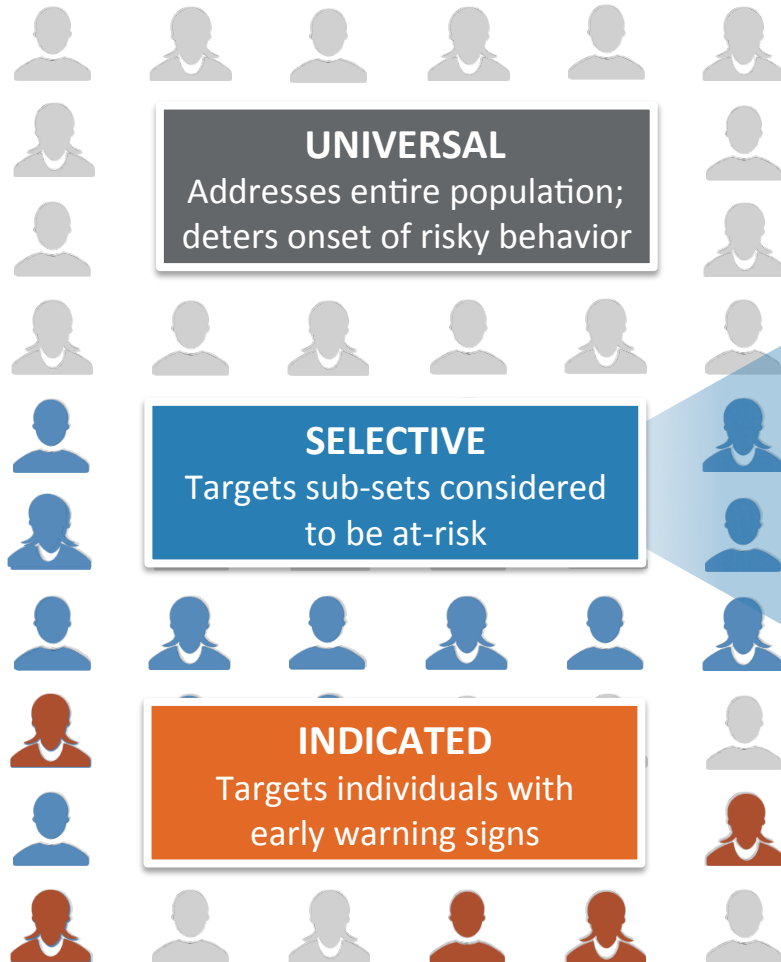
▶ Examining Key Findings

Next Steps

Discussion

Deeper Dive: Targeted and Adaptive

CAMPUS-WIDE EFFORTS



Programs should be targeted and adaptive to participants' identity, characteristics, community, and culture



- Needs
- Strengths
- Norms
- Beliefs
- Expectations
- Practices
- Developmental level

Deeper Dive: Comprehensive, Multifaceted, Engaging

Guiding Questions

Breadth/Depth

- Curricular elements of prevention programs?
- Covering all of the critical information?
- Are students gaining deeper understanding?

Length/Frequency

- Enough time to cover everything appropriately and still keep students' attention?
- Often enough to reinforce and build on learning?

Diverse Strategies

- Are we offering programs that engage students?
- Do programs align with students' varying learning styles?

Consistency/Synergy

- Similar messages across programs/presenters?
- Are students receiving reinforcing and complementary information?

Example: Consent



◀ Consent laws and policies

How to talk/ask about sex ▶



◀ 40min online premat program

Presentation in week 3 of FYS ▶



◀ Classroom presentations

“Consent Day” activity fair ▶

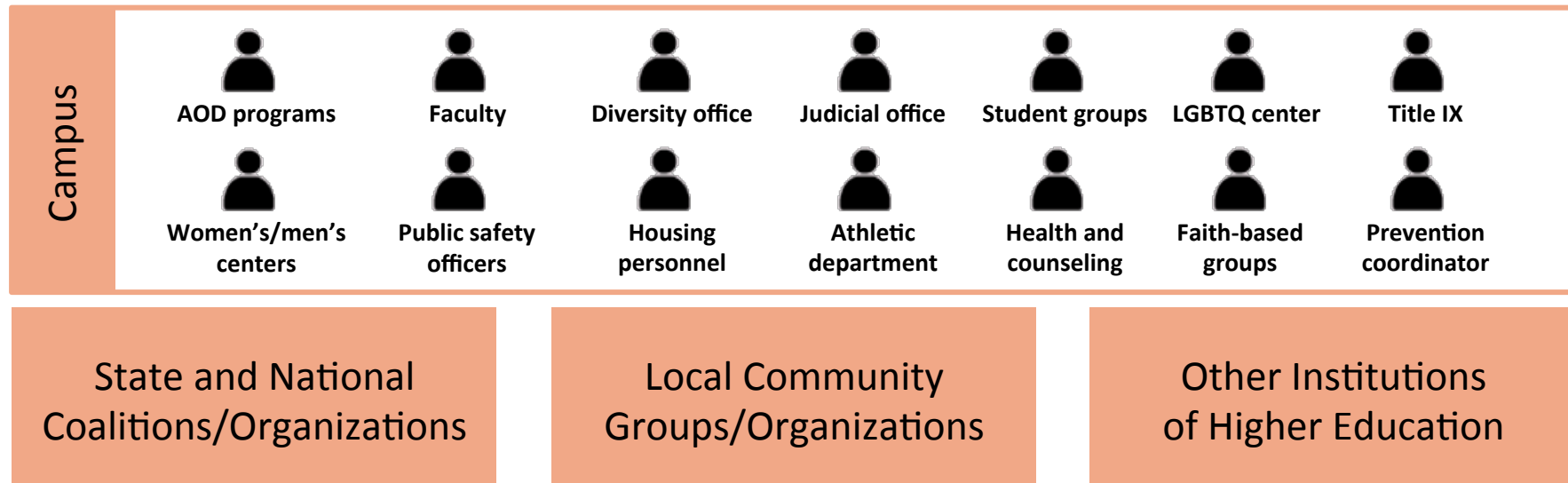


◀ Active consent policy

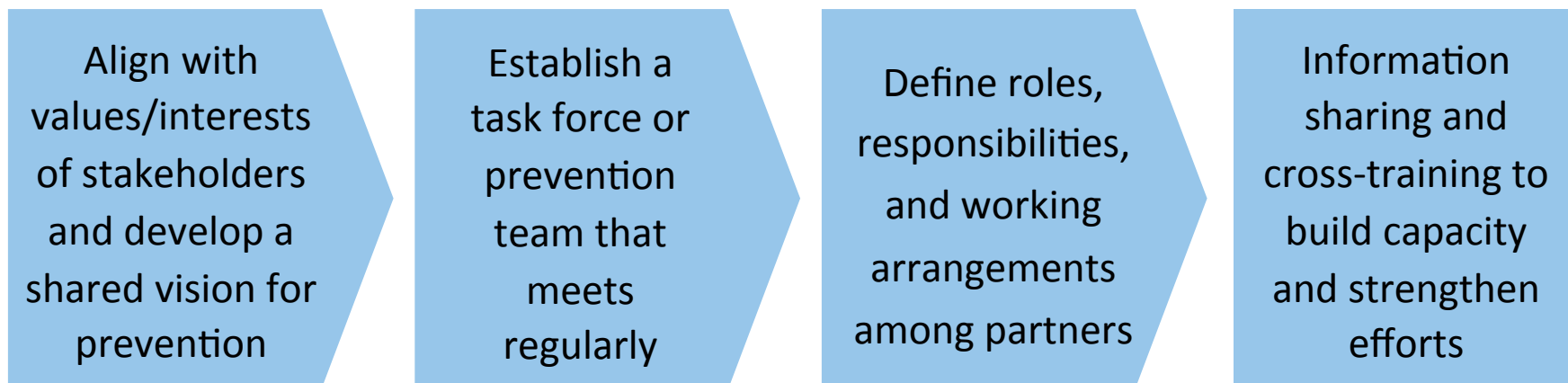
Effects of alcohol on consent ▶




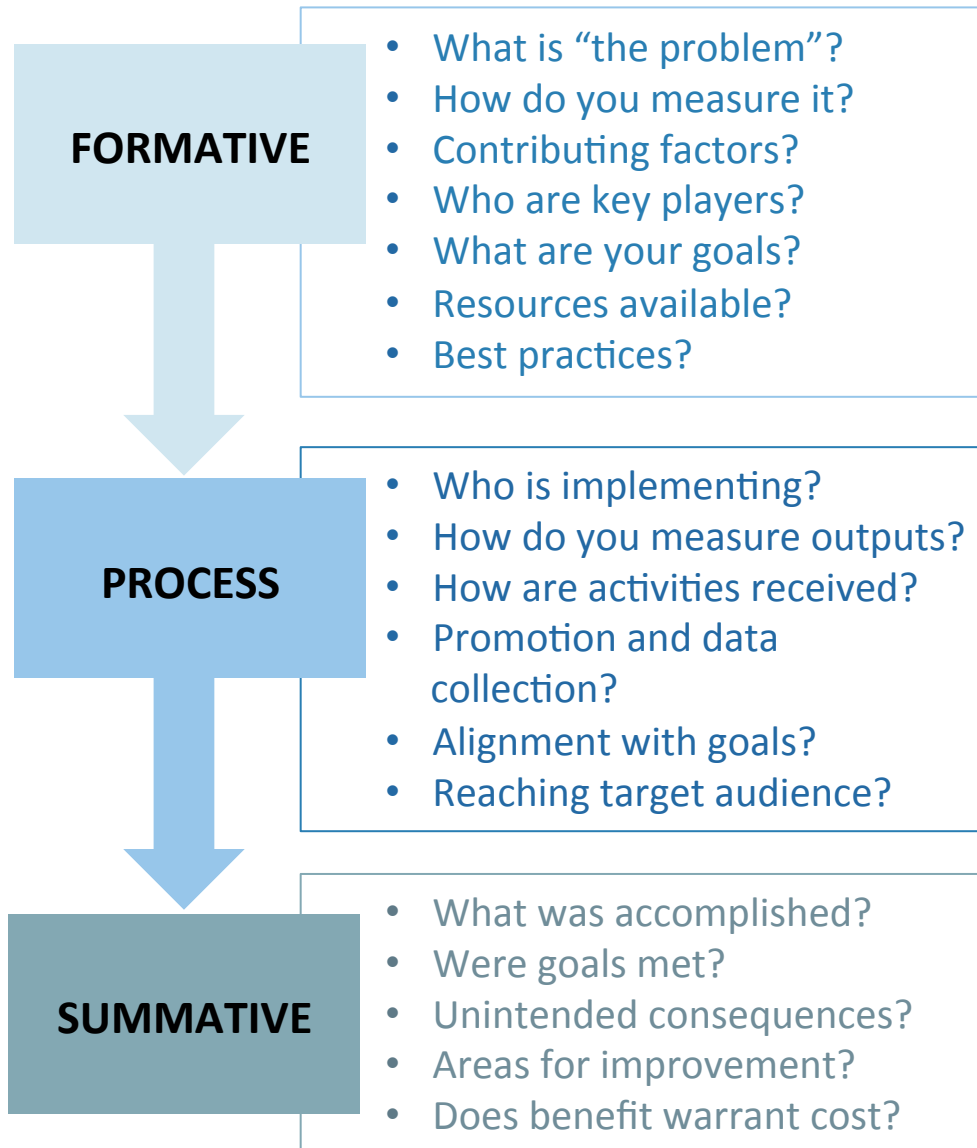
Deeper Dive: Partnerships and Collaboration



THE PEOPLE and THE PROCESS



Deeper Dive: Research and Evaluation



A Note About Climate Surveys

- A few “bad apples”?
- Barriers to transparency
- Leveling the field
- Insights into students
- Programmatic decisions
- Utilization of resources
- A data-driven mindset

Introduction

EverFi Literature Review

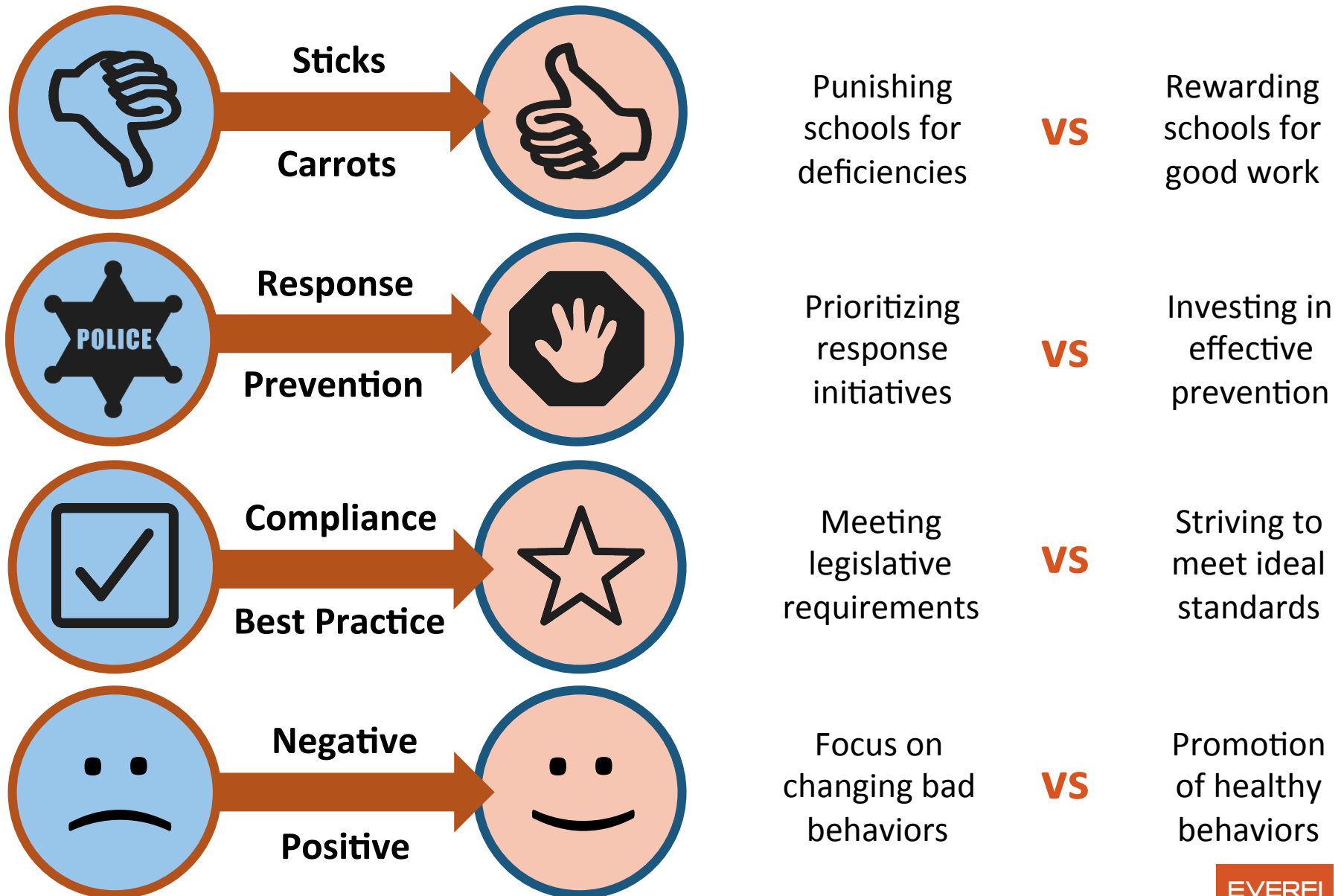
A Model for “Best Practice”

Examining Key Findings

▶ Next Steps

Discussion

Current Trends and Future Directions



Introduction

EverFi Literature Review

A Model for “Best Practice”

Examining Key Findings

Next Steps



Discussion

Beyond Checking the Box: Examining Best Practices for Sexual Assault Prevention

