

AlcoholEdu[™] for High School

Inspiring Students to Make Safer Choices

Alcohol misuse doesn't just put students at risk; it threatens the ability of schools to achieve their educational objectives. *AlcoholEdu® for High School* takes a public health approach to preventing alcohol abuse, incorporating evidence-based prevention methods to create a highly engaging user experience.

AlcoholEdu is proven to reduce negative consequences associated with underage drinking. Through this scalable online program, high schools can reach all students with a consistent message and empower them to make safer and healthier decisions about alcohol.

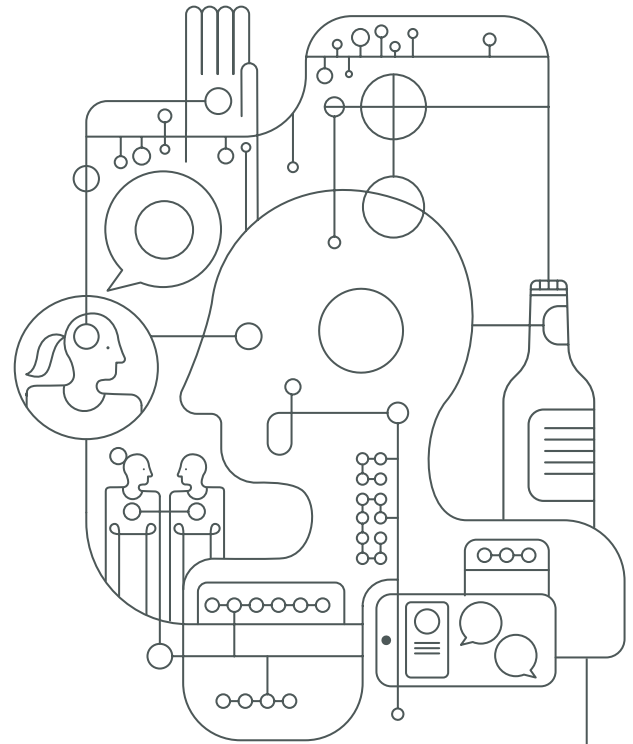
Key Highlights

As a teacher, you receive:

- Supplemental, offline activities
- Engaging class discussion guides
- Pre- and post-assessment and survey reports
- Parent/guardian companion online course

Your students will receive:

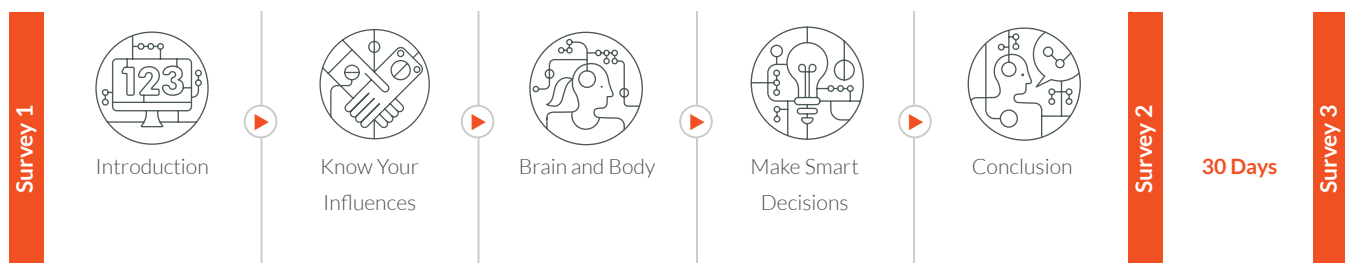
- Interactive lessons that incorporate multiple evidence-based prevention theories
- Access to helpful alcohol-related online resources
- Individual planning tools that allow them to set personal goals



Course Topics Include:

Peer Pressure
Underage Drinking Laws
Alcohol and the Brain & Body
Bystander Behaviors
Values & Goal-Setting
Challenging Common Myths
Talking to Parents

Course Flow



Select Course Modules

○ Know Your Influences

There are a lot of myths surrounding teens' use of alcohol. The media often imply that young people are drinking much more than they really are. In this module, students explore how influences such as advertisements and peers can affect their thoughts and behaviors related to alcohol use.

○ Brain & Body

Alcohol affects the adolescent brain and body in different ways than those of adults. This module explores blood alcohol concentration (BAC), the factors that influence it, and how to help others who may be experiencing alcohol poisoning.

○ Smart Decisions

Making safe choices around drinking can be tough, and it's a choice that many teens will face more than once. Through interactive scenarios and illustrative videos, this module helps students consider factors that may contribute to their decisions, and how to rely on their own values and goals to resist peer pressure.

EVERFI Course Elements

Pedagogy based on the Universal Design for Learning (UDL) and Teach for Understanding (TFU) frameworks:

- Engaging multi-media content for all types of learners
- Pre, post, and formative assessments for evidence-based learning
- Certificate-based skill development

To schedule a demo call
(202) 871-9292

Recommended Grade Level: 9-12

Total Modules: 5 (20-25 minutes each)

Total Time: 2-3 Hours

Subject Fit: Health, Physical Education



EVERFI is the leading education technology company that provides learners of all ages education for the real world, through innovative and scalable digital learning.

EVERFI

3299 K Street NW
Washington DC, 20007
202-602-1295
www.everfi.com