

# EVERFI

## Financial Literacy

*EVERFI - Financial Literacy* builds the foundation for students' future financial well being. Covering everything from common account types to the basics of investing, each module provides bite-sized, instructional animations to make each topic approachable and relatable to students.

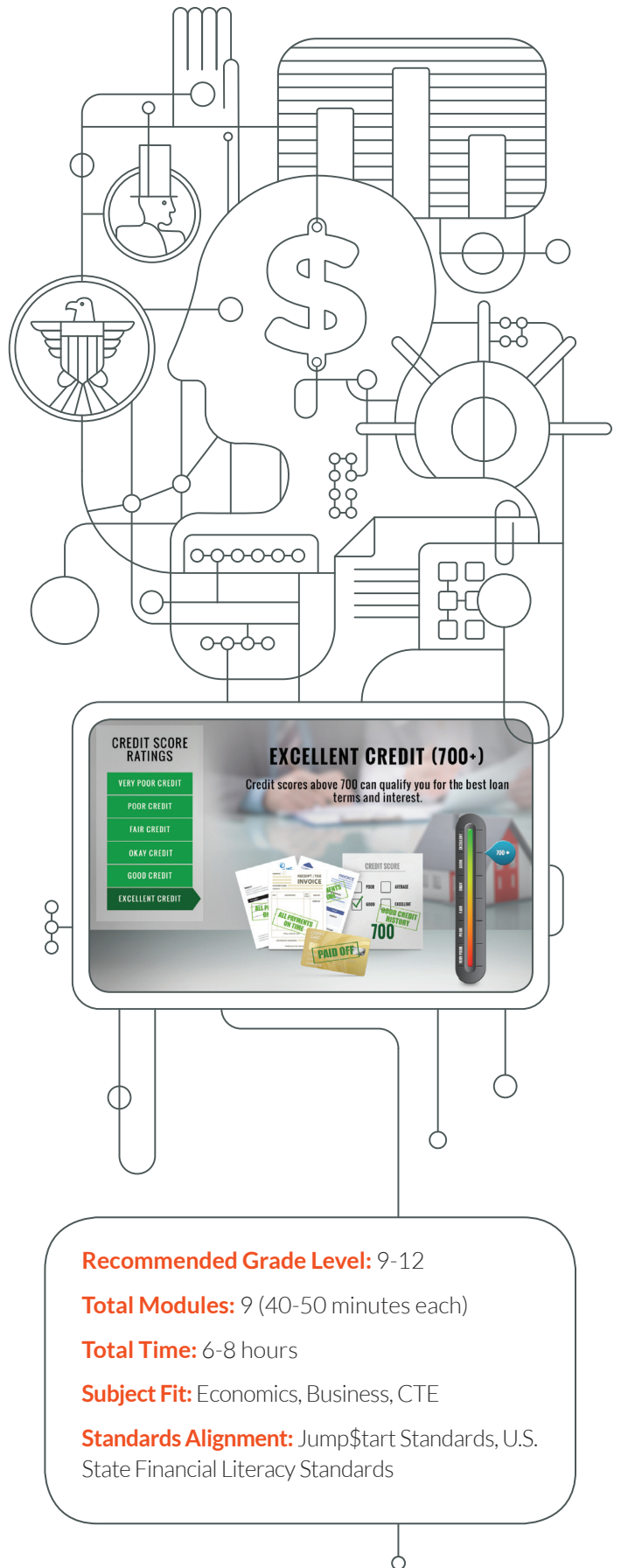
In *EVERFI*, students are immersed in real-life financial scenarios and documentation. Complicated processes – like buying a car or filling out the FAFSA form – are broken down for the student in an easy-to-understand way.

### Course Highlights

- Real-time student score reports on your teacher dashboard
- Supplemental lesson plans
- Detailed standards alignment guide with your state-specific standards
- Answer Keys for all assessments
- Engaging discussion guides
- Guided practice activities that reinforce financial knowledge and skills

### Course Topics

- Banking basics
- Credit cards and debit cards
- Financing higher education
- Saving and investing



# Course Flow



**Lesson 1**  
Savings



**Lesson 2**  
Banking



**Lesson 3**  
Payment  
Types



**Lesson 4**  
Credit  
Scores



**Lesson 5**  
Financing  
Higher  
Education



**Lesson 6**  
Renting v.  
Owning



**Lesson 7**  
Insurance  
and Taxes



**Lesson 8**  
Consumer  
Protection



**Lesson 9**  
Investing

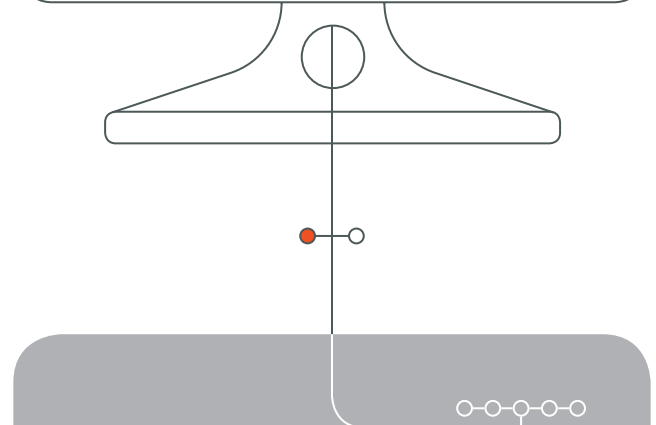
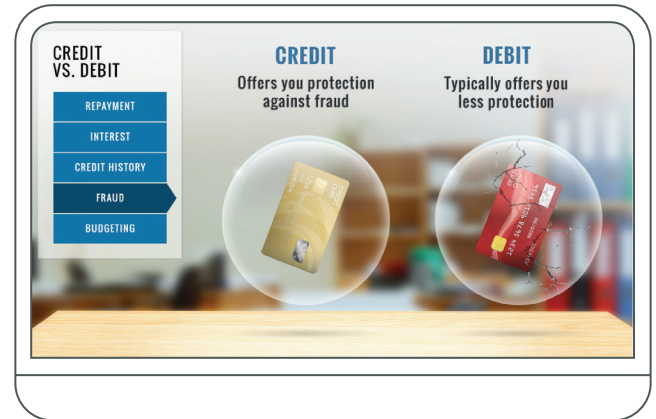
## Learning Activity Highlights

**Filling Out the FAFSA Form** - Students learn first-hand how easy filling out the FAFSA form can be. In this activity, students go through the form step-by-step, answering questions on how to fill out certain sections, where to apply online, and where to go for help if they get stuck.

**Understanding Your Paystub** - You just got your first paycheck, but wait...that number can't be right. In this activity, students practice how to read the components of their paystub, including the effect of taxes and deductions on net pay.

**Can You Afford To Buy A Car?** - That brand new sports car may be calling your name, but there are a lot of things to consider before buying your first car. Students pick a car to buy, and see whether it will push their budget to the limit.

For more information about bringing this program to your school or district, visit [everfi.com/k-12](http://everfi.com/k-12)



EVERFI is the leading education technology company that provides learners of all ages education for the real world, through innovative and scalable digital learning.

**EVERFI**

3299 K Street NW  
Washington DC, 20007  
202-602-1295  
[www.everfi.com](http://www.everfi.com)