

Remote Learning for Families

Facilitating Student Learning at Home with EVERFI



EVERFI

Poll:

How prepared do you feel to facilitate learning at home?

But first, housekeeping.

Audio

Listen through your computer speaker or by calling 866 901 6455
access code:
691-180-256

Questions

Type in the questions box and we'll respond in real time, address them during the Q&A, or send a personal email response within 24 hours.

Social

Find us on Twitter
@EVERFIK12 and use
#EVERFIempowers
and **#remoteteaching** if you share out!

A recording will be emailed to you after the webinar.

Today's Agenda

1

About EVERFI

2

Remote Learning Resources

3

Getting Started - Family Login

4

Tips, Tricks & Best Practices

5

Q & A

Introduction



Jordan Snyder

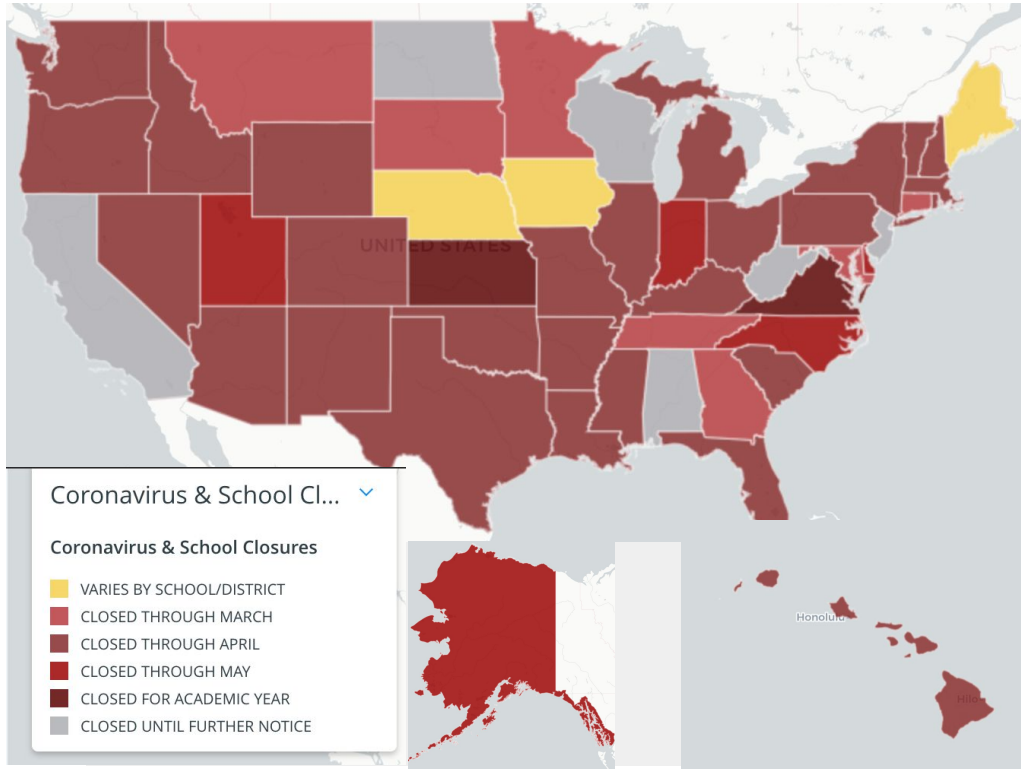
Raleigh, NC

Former Middle School Teacher

Former Lead for Distance Learning - NASA GSFC

EVERFI Implementation Expert

New to Remote Learning?



You Are Not Alone

67%

Of parents don't know their child's reading level.¹

50%

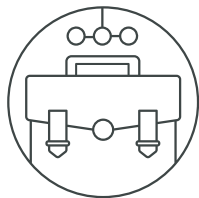
7th-graders experience significant summer learning loss - they lose 50% of their school year gains in math and 36% of their reading gains.²

¹Age of Learning, 2018

²NWEA, 2018

Whole Child Education, Available at No Cost

Career Readiness



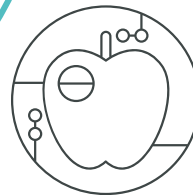
Social and Emotional Learning



Financial Capability



Health and Wellness



Partners + Sponsorship

Thanks to sponsorship from our partners

- Curriculum Provided at **No Cost**
- Unlimited Student Licenses
- Professional Development, Training & On-Going Support
- Special Events and Scholarship Opportunities

Select Regional & National Partners



Remote Learning Resources

everfi.com/k-12/parent-remote-learning/

Financial Education	STEM & Career Exploration	Social Emotional Learning	Health & Wellness	Early Learning	Cultural Literacy
Vault Understanding Money 4-6 th Grade	Future Goals Hockey Scholar – Math Edition 4-7 th Grade	The Compassion Project 2nd-4 th Grade	Healthier Me Nutrition & Wellness 1st-4 th Grade & 6-8 th Grade	WORD Force Literacy Adventure K-2nd Grade	306 African-American History 9-12 th Grade
FutureSmart 6-8 th Grade	Future Goals Hockey Scholar – Science Edition 4-7 th Grade	Ignition Digital Wellness & Safety 6-9 th Grade	Mental Wellness Basics 8-10 th Grade	Summer Slugger Math & Literacy 4-5 th Grade	
Venture Entrepreneurial Expedition 7-10 th Grade	Endeavor STEM Literacy & Career Exploration 7-9 th Grade	Character Playbook Character Education 7-9 th Grade	AlcoholEdu 9-12 th Grade		
EVERFI Financial Literacy 9-12 th Grade	Keys To Your Future College & Career 9-12 th Grade	Honor Code Bullying Prevention 8-10 th Grade	R_x Drug Safety 9-12 th Grade		
Marketplaces Investing Basics 9-12 th Grade					

Remote Learning Guidance



Recommended Activity

- Set Routines
- Use Provided Assignments to Structure the Day
- Socialization & Play¹; Min. 1 Hour Physical Activity Daily²
- Reading: 15 min - 1 hour

WORD Force

Grade Level: K – 2nd Grade

Course Structure: 15 Games with 5 levels each

Game Length: 8-10 minutes per level

Aligns with CCSS ELA K-2 and NC ELA Standard Course of Study



At-a-Glance

Developing strong literacy skills at an early age helps students reach their full potential, generating long-term benefits like lower risk of grade retention, increased graduation rates, and improved earning power. EVERFI's *Early Literacy Project* helps students practice key literacy sub-skills through both meaningful and memorable learning games.

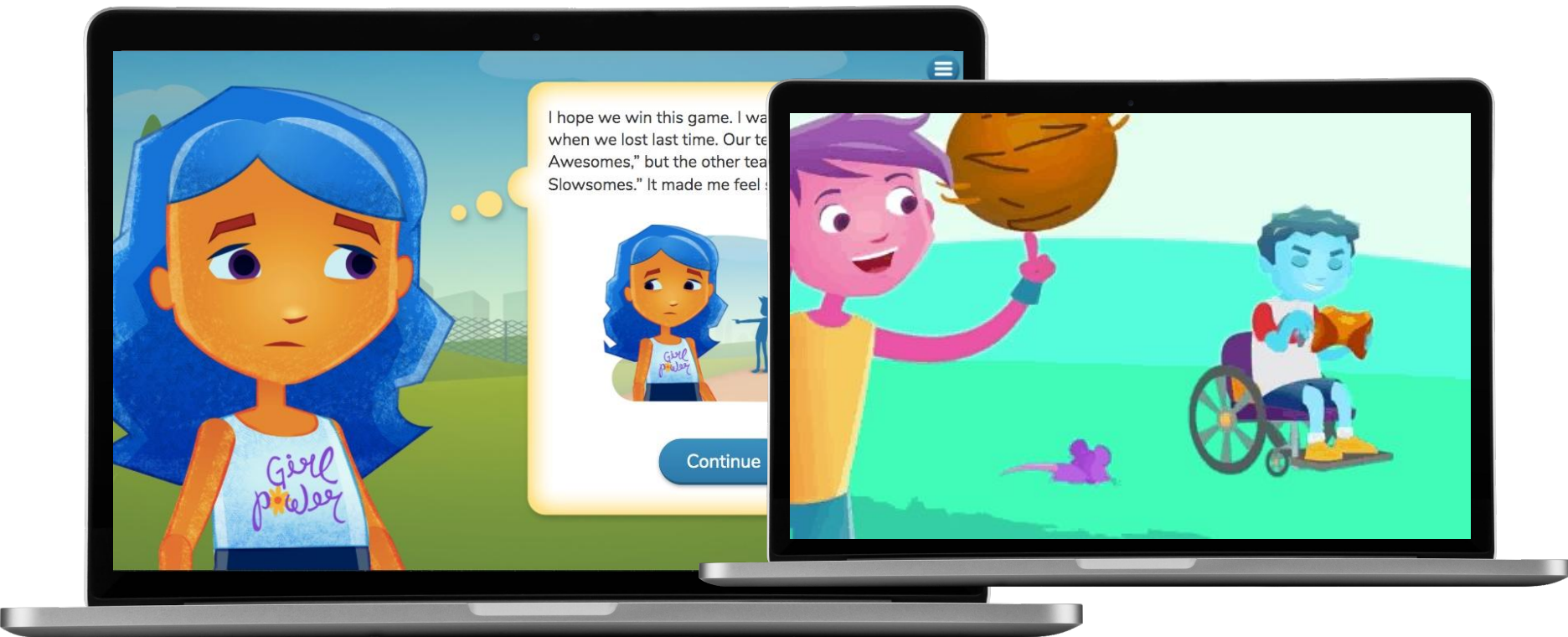
Course Highlights

- Learners practice skills in greater context with their world
- Rich illustrations, colorful environments, and memorable characters
- Immediate feedback helps learners avoid practicing incorrect skills

Featured Literacy Skills:

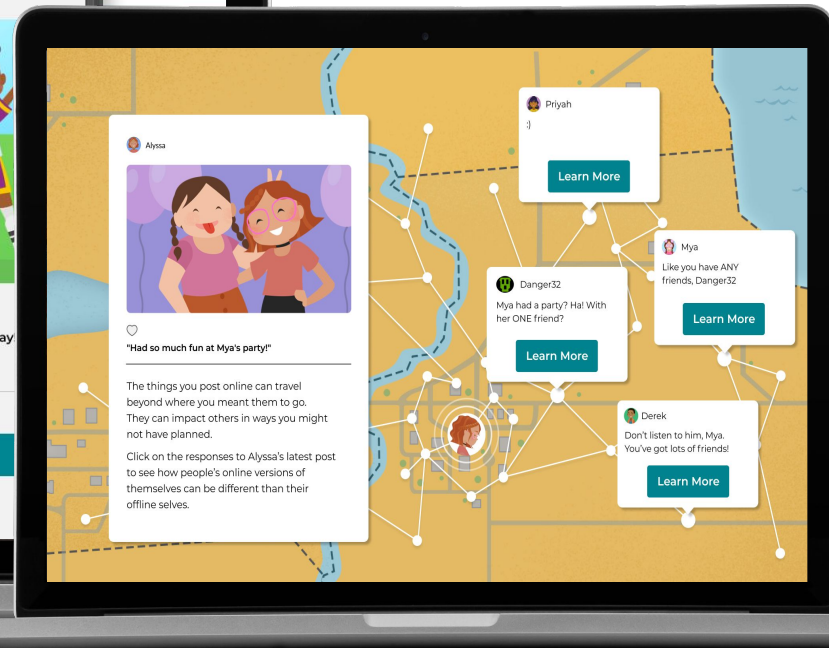
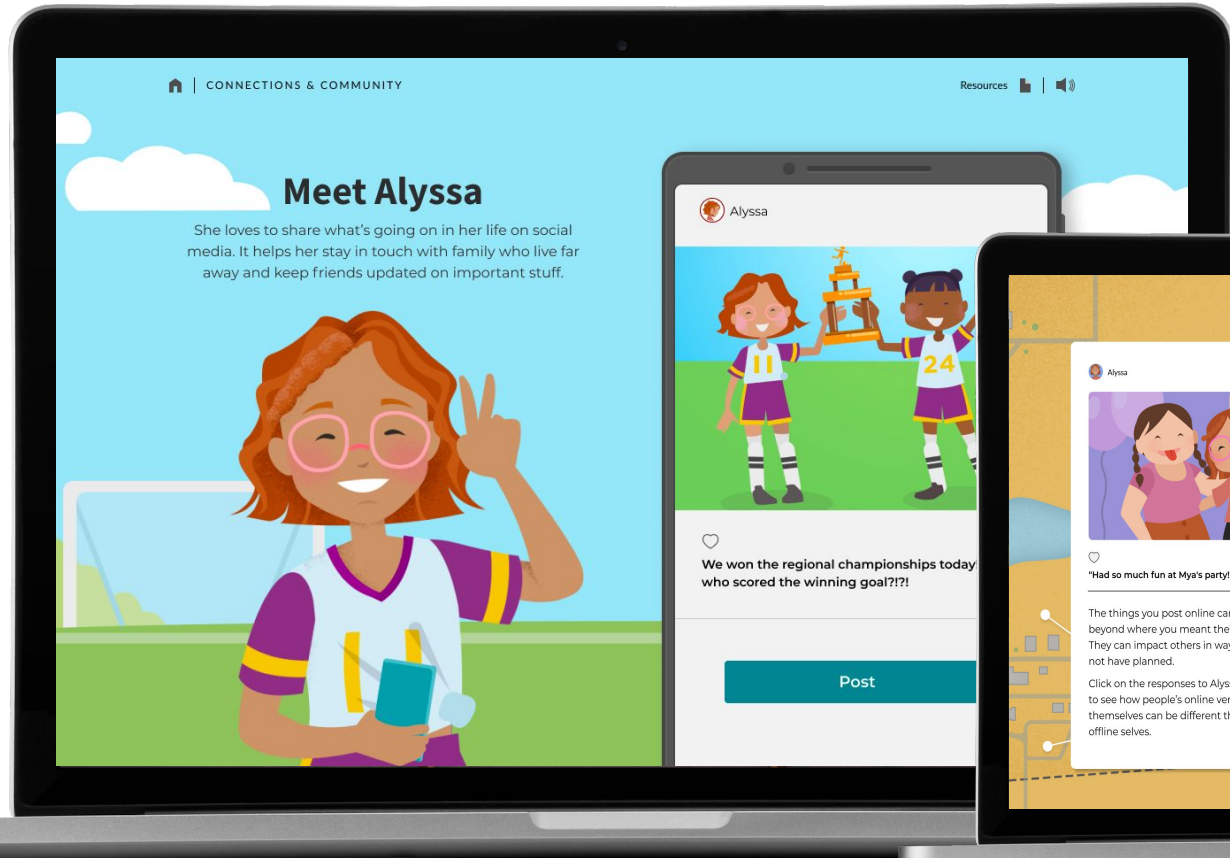
- Phonological Awareness
- Phonemic Awareness
- Letter-Sound / Letter Name Matching
- Word Building
- Sight Words
- Vocabulary
- Reading Comprehension

The Compassion Project



Financial Education	STEM & Career Exploration	Social Emotional Learning	Health & Wellness	Early Learning	Cultural Literacy
Vault Understanding Money 4-6 th Grade	Future Goals Hockey Scholar - Math Edition 4-7 th Grade	The Compassion Project 2nd-4 th Grade	Healthier Me Nutrition & Wellness 1st-4 th Grade & 6-8 th Grade	WORD Force Literacy Adventure K-2nd Grade	306 African-American History 9-12 th Grade
FutureSmart 6-8 th Grade	Future Goals Hockey Scholar - Science Edition 4-7 th Grade	Ignition Digital Wellness & Safety 6-9 th Grade	Mental Wellness Basics 8-10 th Grade	Summer Slugger Math & Literacy 4-5 th Grade	
Venture Entrepreneurial Expedition 7-10 th Grade	Endeavor STEM Literacy & Career Exploration 7-9 th Grade	Character Playbook Character Education 7-9 th Grade	AlcoholEdu 9-12 th Grade		
EVERFI Financial Literacy 9-12 th Grade	Keys To Your Future College & Career 9-12 th Grade	Honor Code Bullying Prevention 8-10 th Grade	R_x Drug Safety 9-12 th Grade		
Marketplaces Investing Basics 9-12 th Grade					

Ignition: Teaching Digital Responsibility



Online and Offline STEM Activities

Data Collection:

My Partner's Name: _____

My Partner's Test Results:

	Ruler measurement
Trial 1	
Trial 2	
Trial 3	

My Test Results:

	Ruler measurement
Trial 1	
Trial 2	
Trial 3	

Data Analysis:

Who had the faster reaction time – you or your partner? How can you tell?

Did you notice any problems during your experiment that might have affected your results? Explain.

The screenshot shows a digital interface for a STEM activity. At the top left, there is a home icon and the text "ROUND 1/5". A dark blue instruction box in the upper right contains the text: "Now measure the incoming angle with a protractor. Click 'Check' to see if your measurement is correct." Below this, it says "Incoming Angle: degrees". A blue "CHECK" button is located at the bottom right of the instruction box. The main area features a large protractor with a blue shaded sector labeled "INCOMING ANGLE". A dashed line indicates the angle being measured, which is approximately 35 degrees. A small cartoon character is visible on the right side of the interface.

Financial Education	STEM & Career Exploration	Social Emotional Learning	Health & Wellness	Early Learning	Cultural Literacy
Vault Understanding Money 4-6 th Grade	Future Goals Hockey Scholar - Math Edition 4-7 th Grade	The Compassion Project 2nd-4 th Grade	Healthier Me Nutrition & Wellness 1st-4 th Grade & 6-8 th Grade	WORD Force Literacy Adventure K-2nd Grade	306 African-American History 9-12 th Grade
FutureSmart 6-8 th Grade	Future Goals Hockey Scholar - Science Edition 4-7 th Grade	Ignition Digital Wellness & Safety 6-9 th Grade	Mental Wellness Basics 8-10 th Grade	Summer Slugger Math & Literacy 4-5 th Grade	
Venture Entrepreneurial Expedition 7-10 th Grade	Endeavor STEM Literacy & Career Exploration 7-9 th Grade	Character Playbook Character Education 7-9 th Grade	AlcoholEdu 9-12 th Grade		
EVERFI Financial Literacy 9-12 th Grade	Keys To Your Future College & Career 9-12 th Grade	Honor Code Bullying Prevention 8-10 th Grade	R_x Drug Safety 9-12 th Grade		
Marketplaces Investing Basics 9-12 th Grade					

Venture into Entrepreneurship



Focusing on Health & Wellness

Before we get started, what do you think?
What do you do when you experience stress?

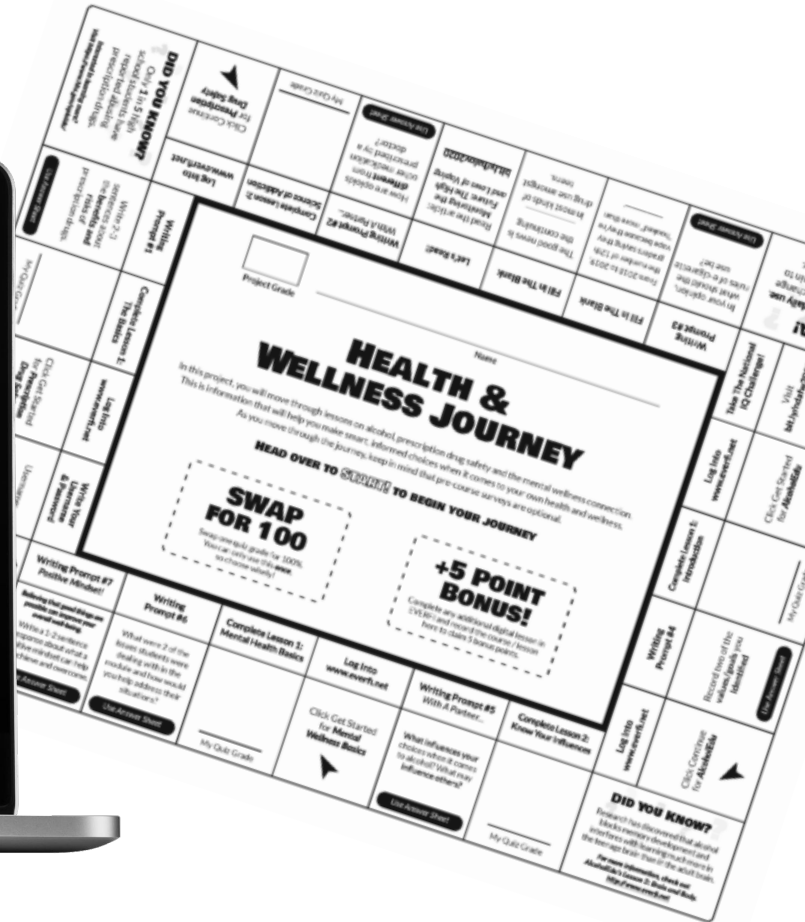
List three strategies that you use to deal with stress or difficult situations by typing
one word or phrase at a time and then hitting enter.

Type one word or phrase and hit enter

ENTER

Your descriptions will be anonymous and not shared with anyone.

Healthy Coping Skills



Access from Home

https://platform.everfi.net/remote_learning

Digital Lessons for Remote Learning

In this time of need, EVERFI is here to help families bring learning to life at home with online lessons to support real world-skills.

If you already have a student account, click "Sign In" to use your EVERFI account or "Log in with Clever" to use your Clever account.

If you are new to EVERFI, you can create your student account now. Select your state, find your school, and create your account to get started.

Register

Find Your School:

Please select a state and search for your school.

State/Province

Next

Already have an account?

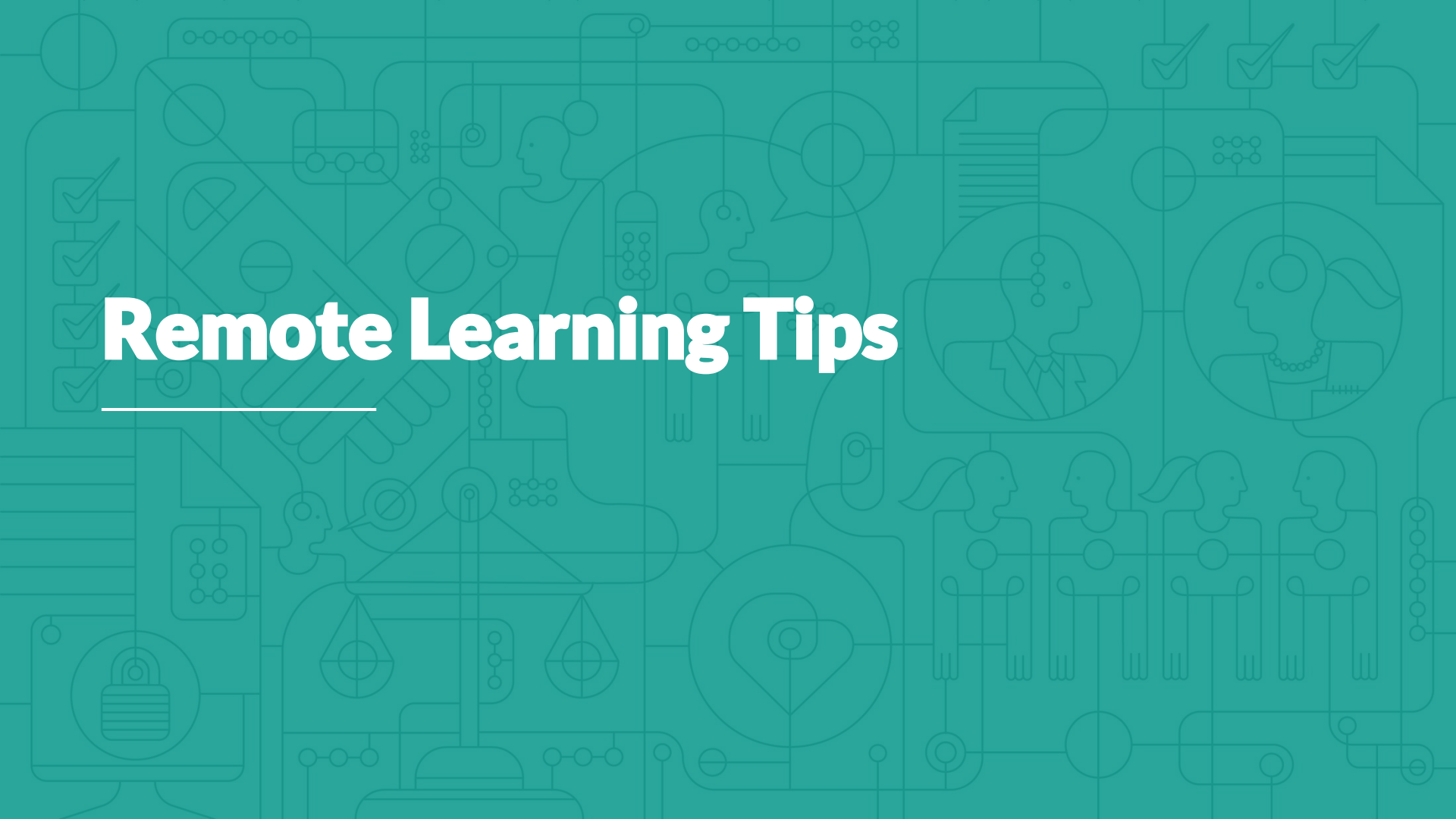
Sign In

OR

C

Log in with Clever

Remote Learning Tips



Find Out Student Access Method

1. Ask your child if they've ever used EVERFI before.
2. Ask if they login to any apps at school through Clever.
3. Navigate to the EVERFI Remote Learning site.
4. Have them either **login** with their username and password, create an account or login via Clever.

For Traditional Access

1. **Write down** student username and password when created.
2. **Bookmark** the login page
3. Click the link at the top of the screen to **add courses**.
4. Three EVERFI resources are **optimized for mobile phones**: Endeavor, Ignition (New), and Vault.

For Clever/SSO Access

1. Make sure student is **logged into Clever** (they should know how!)
2. Use the “Login with Clever” button!
3. Three EVERFI resources are **optimized for mobile phones**:
Endeavor, Ignition (New), and Vault.

Next Steps

Offline Resources

EVERFI is constantly working to answer needs from our community.

In the meantime, check out learningkeepsgoing.org for additional resources to enrich your child's learning.

Support

If you have any questions about the resources or getting started, email us at remotelearning@everfi.com

Share

Share the learning that's happening!

Share what your child is working on via social media - tag **@EVERFIK12** and/or use **#EVERFIempowers** and **#remotelearning**

EVERFI

EDUCATION FOR THE REAL WORLD