



# Remote Learning Tools

for Grades K-3

## Poll:

**On a scale of 1-5**

How comfortable were you with distance learning tools before remote education became a necessity?

# But first, housekeeping.

## Audio

Listen through your computer speaker or by calling (951) 384-3421, access code: 613-645-719.

## Questions

Type your questions in the box. We'll get to your questions in real time or during the Q&A. Otherwise, you'll receive a response via email within 24 hours.

## Social

Find us on Twitter, Facebook and Instagram at @EVERFIK12. Share your experiences using #EVERFIempowers if you share out!

A recording will be emailed to you after the webinar.

# Today's Agenda

**1**

Introductions

**2**

About EVERFI

**3**

Online & Offline Resources

**4**

Getting Started

# Introductions



**Colleen Klabon**

Atlanta, GA

K-12 Director of Implementation &  
Outreach



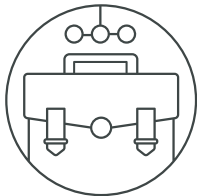
**John Cárdenas**

Miami, FL

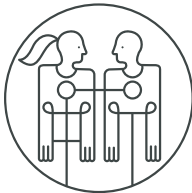
K-12 Implementation Manager

# Whole Child Education

Career Readiness



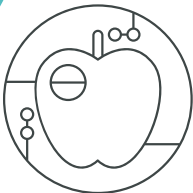
Social and Emotional Learning



Financial Capability



Health and Wellness



# Partners + Sponsorship

## Thanks to sponsorship from our partners

- Resources Provided at **No Cost**
- Unlimited Student Licenses
- Professional Development, Training & On-Going Support
- Special Events and Scholarship Opportunities

## Select Regional & National Partners



Financial Education	STEM & Career Exploration	Social Emotional Learning	Health & Wellness	Early Learning	Cultural Literacy
<b>Vault</b> Understanding Money 4-6 <sup>th</sup> Grade	<b>Future Goals</b> Hockey Scholar – Math Edition 4-7 <sup>th</sup> Grade	<b>The Compassion Project</b> 2nd-4 <sup>th</sup> Grade	<b>Healthier Me</b> Nutrition & Wellness 1st-4 <sup>th</sup> Grade & 6-8 <sup>th</sup> Grade	<b>WORD Force</b> Literacy Adventure K-2nd Grade	<b>306</b> African-American History 9-12 <sup>th</sup> Grade
<b>FutureSmart</b> 6-8 <sup>th</sup> Grade	<b>Future Goals</b> Hockey Scholar – Science Edition 4-7 <sup>th</sup> Grade	<b>Ignition</b> Digital Wellness & Safety 6-9 <sup>th</sup> Grade	<b>Mental Wellness Basics</b> 8-10 <sup>th</sup> Grade	<b>Summer Slugger</b> Math & Literacy 4-5 <sup>th</sup> Grade	
<b>Venture</b> Entrepreneurial Expedition 7-10 <sup>th</sup> Grade	<b>Endeavor</b> STEM Literacy & Career Exploration 7-9 <sup>th</sup> Grade	<b>Character Playbook</b> Character Education 7-9 <sup>th</sup> Grade	<b>AlcoholEdu</b> 9-12 <sup>th</sup> Grade		
<b>EVERFI</b> Financial Literacy 9-12 <sup>th</sup> Grade	<b>Keys To Your Future</b> College & Career 9-12 <sup>th</sup> Grade	<b>Honor Code</b> Bullying Prevention 8-10 <sup>th</sup> Grade	<b>R<sup>x</sup> Drug Safety</b> 9-12 <sup>th</sup> Grade		
<b>Marketplaces</b> Investing Basics 9-12 <sup>th</sup> Grade					



# Educator Benefits

In addition to interactive, supplemental digital resources aligned to your state standards, educators also receive:



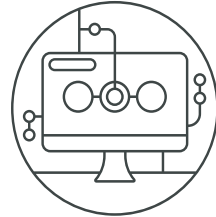
---

Real time Reporting  
On Students'  
Knowledge + Growth



---

Lesson Plans and  
Discussion  
Questions



---

Access to EVERFI's  
Growing Library of  
Digital Curriculum  
and Offline Lessons



---

Student Scholarship  
Opportunities

# Online & Offline Resources

---



## Poll:

What is your biggest personal challenge with distance learning?

# WORD Force

Grade Level: K – 2<sup>nd</sup> Grade

Course Structure: 15 Games with 5 levels each

Game Length: 8-10 minutes per level

Aligns with CCSS ELA K-2 and NC ELA Standard Course of Study



## At-a-Glance

Developing strong literacy skills at an early age helps students reach their full potential, generating long-term benefits like lower risk of grade retention, increased graduation rates, and improved earning power. EVERFI's *Early Literacy Project* helps students practice key literacy sub-skills through both meaningful and memorable learning games.

## Course Highlights

- Learners practice skills in greater context with their world
- Rich illustrations, colorful environments, and memorable characters
- Immediate feedback helps learners avoid practicing incorrect skills

## Featured Literacy Skills:

- Phonological Awareness
- Phonemic Awareness
- Letter-Sound / Letter Name Matching
- Word Building
- Sight Words
- Vocabulary
- Reading Comprehension

# Promoting Early Literacy



# The Compassion Project

Grade Level: 2nd -4th

Total Lessons: 15 lessons (3 digital), 25-30 minutes each

Aligns with CASEL SEL framework; CCSS ELA Standards



## At-a-Glance

Through storytelling, reflection, and rich interactive experiences, this curriculum helps to build a foundation for compassion to take root. Videos, digital activities, and classroom lessons invite students to engage with compassion in context and apply new skills, strategies, and insights to their daily lives.

## Course Highlights

- Short videos to model key themes and concepts
- Interactive scenarios help students practice compassion
- Guided classroom discussion

## Course Topics

- Defining compassion
- Empathy and perspective taking
- Mindfulness and growth mindset



# Digital Resource

## Reflection Questions



Let's talk about what happened to the characters in this story.

Everyone should be treated with compassion, but in this story who looked like they needed compassion?

Tye

Gabby

David

# Offline Resources

**Resources**

- Reflection Questions
- Glossary
- Module 4: Investing in You - Lesson Plan
- Standards Alignment
- Module 3: Ways to Pay - Transaction Type Worksheet
- Module 2: Smart Shopping - Celebration Budget Worksheet
- Curriculum Guide
- Course Outline
- Module 1: Welcome Mayor! - Lesson Plan
- Module 4: Investing in You - College and Career Planning Worksheet
- Module 4: Investing in You - Assessment Answer Key
- Module 5: Growing a Business - Lesson Plan
- Module 5: Growing a Business - Building a Business Plan

**The Compassion Project**  
Grade: 2, 3, 4  
Subject: ELA, Morning Meeting

**FutureSmart**  
Grade: 6, 7, 8  
Subject: Business, Economics, Social Studies



## LESSON 2 What Is Empathy?

45min Prerequisite: Completion of Lesson 1: Defining Compassion

### Objectives students will be able to...

- Describe empathy (as feeling for others or understanding others feelings).
- Compare and contrast empathy and compassion.
- Describe how empathy leads to compassion.

\*Digital Lesson: EmpathEyes

### Materials

- A/V to play video
- Hula hoops or Venn diagram manipulatives
- Venn diagram cards
- Chart paper pre-set up (see activity 2)
- Markers
- How Do You Feel? worksheets

### Teacher Notes

Empathy is when you see someone in a situation (or hear a story) and you can understand what they want, how they might feel, and it may even make your feelings change in response. When you know how others feel, and you understand what they need or want, that could lead to showing compassion. Being able to relate with someone in need increases your desire to give them compassion. In this lesson, students will describe empathy and how it may lead to compassion.

Empathy + Action = Compassion

Compassion is when you SEE someone in need, CARE about their feelings, and DO something to show you care.

### Opening

5min  
Format: Think, pair, share  
activate prior knowledge, video



Last time, we learned about what compassion is and how we can show it. Think inside your head about what compassion means and how to demonstrate it. Pause for a few seconds. Now, turn and talk to a partner together about what you remember about compassion. After they've discussed briefly with a partner, ask for a few volunteers to raise their hands and share aloud.

Today we are going to continue learning about compassion by exploring empathy. We will talk about what it means, how it is different from compassion, and how empathy can lead to compassion. Show me with your thumbs how familiar you are with the word "empathy." Thumbs up means totally know what it is; thumbs down means never heard it before; thumbs in the





# Planning Ahead

- 2-Week Content Playlist
- Enrichment, with Learning Objectives
- Life Skills, Self-Improvement
- Standards Alignment Available

Remote Learning Two Week Planner

Grades K-3

WORD Force & The Compassion Project

Day	Lesson	Est. Time	Learning Objectives	Completion <input checked="" type="checkbox"/>
Monday	WORD Force Game 1: Sprouting Sounds	45 min	Beginning/ending sounds	
	Compassion Lesson 1: Compassion Playground	15 min	Defining compassion	
Tuesday	WORD Force Game 2: Raise-A-Rhyme	45 min	Identify/practice rhyming words	
	Compassion Lesson 2: Empath Eyes	15 min	Empathy, taking perspective	
	<a href="#">Compassion Video: Runaway Rat</a>	5 min	Identify someone showing compassion	
Wednesday	WORD Force Game 3: Veggie Village	45 min	Matching sounds with letters	
	WORD Force Game 4: Wandering Words	45 min	Building words with vowel sounds	
Thursday	WORD Force Game 5: Cotton Candy Breakdown	45 min	Blend phonemes into words	
	WORD Force Game 6: Stellar Speller	45 min	Identify common spelling patterns	
	<a href="#">Compassion Video: Squeaky Wheel</a>	5 min	Results of showing compassion	
Friday	WORD Force Game 7: Dictionary Dig	45 min	Learn new vocab words	
	Compassion Lesson 3: Mindful Maze	10 min	Mindfulness and self-regulation	

Financial Education	STEM & Career Exploration	Social Emotional Learning	Health & Wellness	Early Learning	Cultural Literacy
<b>Vault</b> Understanding Money 4-6 <sup>th</sup> Grade	<b>Future Goals</b> Hockey Scholar – Math Edition 4-7 <sup>th</sup> Grade	<b>The Compassion Project</b> 2nd-4 <sup>th</sup> Grade	<b>Healthier Me</b> Nutrition & Wellness 1st-4 <sup>th</sup> Grade & 6-8 <sup>th</sup> Grade	<b>WORD Force</b> Literacy Adventure K-2nd Grade	<b>306</b> African-American History 9-12 <sup>th</sup> Grade
<b>FutureSmart</b> 6-8 <sup>th</sup> Grade	<b>Future Goals</b> Hockey Scholar – Science Edition 4-7 <sup>th</sup> Grade	<b>Ignition</b> Digital Wellness & Safety 6-9 <sup>th</sup> Grade	<b>Mental Wellness Basics</b> 8-10 <sup>th</sup> Grade	<b>Summer Slugger</b> Math & Literacy 4-5 <sup>th</sup> Grade	
<b>Venture</b> Entrepreneurial Expedition 7-10 <sup>th</sup> Grade	<b>Endeavor</b> STEM Literacy & Career Exploration 7-9 <sup>th</sup> Grade	<b>Character Playbook</b> Character Education 7-9 <sup>th</sup> Grade	<b>AlcoholEdu</b> 9-12 <sup>th</sup> Grade		
<b>EVERFI</b> Financial Literacy 9-12 <sup>th</sup> Grade	<b>Keys To Your Future</b> College & Career 9-12 <sup>th</sup> Grade	<b>Honor Code</b> Bullying Prevention 8-10 <sup>th</sup> Grade	<b>R<sup>x</sup> Drug Safety</b> 9-12 <sup>th</sup> Grade		
<b>Marketplaces</b> Investing Basics 9-12 <sup>th</sup> Grade					

# Getting Started- Teachers

- everfi.com/newteacher
- Select your state & school
- Username & password
- Select one resource to start & add more later

The image is a screenshot of the EVERFI website's 'Educator Quick Start Guide'. It features the EVERFI logo at the top left. The main heading is 'Educator Quick Start Guide' in a large, bold, orange font. Below this, there is a QR code and a clock icon. A navigation bar contains icons for 'HOME', 'CATALOG', and 'SUPPORT'. The guide is divided into three numbered sections: 1. Locate Your School, 2. Create Your Profile, and 3. Create Your Classes. Each section includes a list of instructions and a corresponding screenshot of the user interface. Section 1 shows a 'Register' form with a 'K12 Teacher' selection and a 'Find Your School' dropdown. Section 2 shows a 'Register' form with fields for 'First Name', 'Last Name', 'Enter your school email address', 'Create a Password', and 'Password Confirmation'. Section 3 is partially visible at the bottom.

**EVERFI**

## Educator Quick Start Guide

▶ Go to [EVERFI.com/newteacher](https://everfi.com/newteacher) to begin

**1. Locate Your School**

- Find your state/province
- Enter your school name  
(if your school isn't listed, select "Can't find your school?")

**2. Create Your Profile**

- Enter your first & last name
- Enter your school email address
- Create & confirm your password
- Select a course from the drop-down  
(You can add additional courses after logging in)
- Agree to terms of service

**3. Create Your Classes**

**Register**

Student/Learner **K12 Teacher**

Find Your School:  
Please select a state and search for your school.

State/Province

Can't find your school? **Next**

Already have an account? [Login](#)

**Register**

Student **K12 Teacher**

First Name Last Name

Enter your school email address

Create a Password

Password Confirmation

Show password

Select a course

I agree to the [terms of service](#)

**Next**

Already have an account? [Login](#)

HOME CATALOG SUPPORT


COURSES CLASSES MYK12 MYK12

# The Student Dashboard

CURRENT COURSES   REMOTE COURSES   PAST COURSES

Enter Course Code   Add Course

## 306




[▶ CONTINUE](#)


Current Module: [≡ PROGRESS](#)

Underground Railroad

Supported By:



## AlcoholEDU For High School




[▶ CONTINUE](#)


Current Module: [≡ PROGRESS](#)

Brain and Body

Supported By:




## Keys To Your Future



[▶ CONTINUE](#)

## The Compassion Project



[▶ CONTINUE](#)

# Questions?

## Poll:

Which resources would most benefit your students as they adjust from a structured school environment to learning from home?

*(select as many as you'd like)*

# Next Steps

## Learn

Visit [everfi.com](https://everfi.com) for more information.

Use [everfi.com/k-12/teacher-remote-learning/](https://everfi.com/k-12/teacher-remote-learning/) to learn more about addressing remote learning with your students.

## Try

Register for an account at [www.everfi.com/newteacher](https://www.everfi.com/newteacher)

Try a new course. You can add from your teacher dashboard.

## Share

Share with colleagues.

Share about your class on social media - tag @EVERFIk12 and/or use #EVERFIempowers

We are  
**EVERFI**



[twitter.com/  
EVERFIk12](https://twitter.com/EVERFIk12)



[instagram.com/  
/EVERFIk12](https://www.instagram.com/EVERFIk12)



[facebook.com/EVERFIK12](https://facebook.com/EVERFIK12)  
[facebook.com/groups/EVERFIK12](https://facebook.com/groups/EVERFIK12)