



EVERFI

**Communicating Your  
Impact: Driving Change  
with Data**

# Poll Question 1

As it stands, what will teaching students look like for you in the fall in your district?

- 100% Remote
- Traditional - In school 5 days a week
- Hybrid Model
- C'mon, I have no idea!

# But first, housekeeping.

## Audio

Listen through your computer speaker or by calling (213) 929-4221

**access code:**  
816-054-415

## Questions

Type in the questions box and we'll get to your questions in real time or address them during the Q&A.

## Social

Find us on Twitter  
**@EVERFIK12** and use  
**#EVERFlempowers**  
when you share out

A recording will be emailed to you following the webinar.



# Agenda

1. Norms In Our Current Education Landscape
2. Using Data to Inform Decisions
3. Lessons Learned From The Field
4. Resources and Next Steps

# Introductions



**Casey Milstead**

*Director of Secondary Education and  
Digital Learning  
Davidson County Public Schools  
Lexington, NC*



**Ashlee Cappucci**

*Supervisor for K-12 Physical Education,  
Health, and Dance  
Hillsborough County Public Schools  
Tampa, FL*



**Rebecca Biel**

*Social Studies Supervisor, K-12  
Saint Paul Public Schools  
St. Paul, MN*

# Your Partners in Whole Child Learning



**Engaging Digital Lessons**



**Assessments & Reporting**



**Local Support**

**Always Free.**

Financial Education	STEM & Career Exploration	Social Emotional Learning	Health & Wellness	Academic Readiness	Cultural Literacy
<b>Vault</b> Understanding Money 4–6 <sup>th</sup> Grade	<b>Future Goals</b> Hockey Scholar – Math Edition 4–7 <sup>th</sup> Grade	<b>The Compassion Project</b> 2nd–4 <sup>th</sup> Grade	<b>Healthier Me</b> Nutrition & Wellness 1st–4 <sup>th</sup> Grade & 6–8 <sup>th</sup> Grade	<b>WORD Force</b> Early Literacy PK–2 <sup>nd</sup> Grade	<b>306</b> African–American History 9–12 <sup>th</sup> Grade
<b>FutureSmart</b> 6–8 <sup>th</sup> Grade	<b>Future Goals</b> Hockey Scholar – Science Edition 4–7 <sup>th</sup> Grade	<b>Ignition</b> Digital Wellness & Safety 6–9 <sup>th</sup> Grade	<b>Mental Wellness Basics</b> 8–10 <sup>th</sup> Grade	<b>Summer Slugger</b> Math & Literacy 4–5 <sup>th</sup> Grade	
<b>Venture</b> Entrepreneurial Expedition 7–10 <sup>th</sup> Grade	<b>Endeavor</b> STEM Literacy & Career Exploration 7–9 <sup>th</sup> Grade	<b>Character Playbook</b> Character Education 7–9 <sup>th</sup> Grade	<b>AlcoholEdu</b> 9–12 <sup>th</sup> Grade		
<b>EVERFI</b> Financial Literacy 9–12 <sup>th</sup> Grade	<b>Keys To Your Future</b> College & Career 9–12 <sup>th</sup> Grade	<b>Honor Code</b> Bullying Prevention 8–10 <sup>th</sup> Grade	<b>Prescription Drug Safety</b> 9–12 <sup>th</sup> Grade		
<b>Marketplaces</b> Investing Basics 9–12 <sup>th</sup> Grade					

---

# The Complexity Of Today's Students





# 11,000 Students on The Impact of COVID-19

## On Mental Health

38% are more concerned  
about their mental  
well-being

## On Academics

47% are more concerned  
about their readiness for  
the next academic year

## On Tech Use

35% are more concerned  
about their amount of  
time they are spending  
online

## On Peer Connection

33% are more concerned  
about how connected  
they are to their peers



# “What do you feel are the most pressing issues impacting students today?”

Mental health

56%

Social media

53%

Cyberbullying

35%

99% of educators said it is **extremely important**  
or **very important** to include these types of  
**EVERFI** topics in their schools curriculum

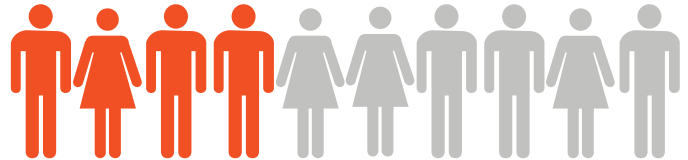
71%

of educators feel that their school has the  
resources necessary to support **physical**  
health

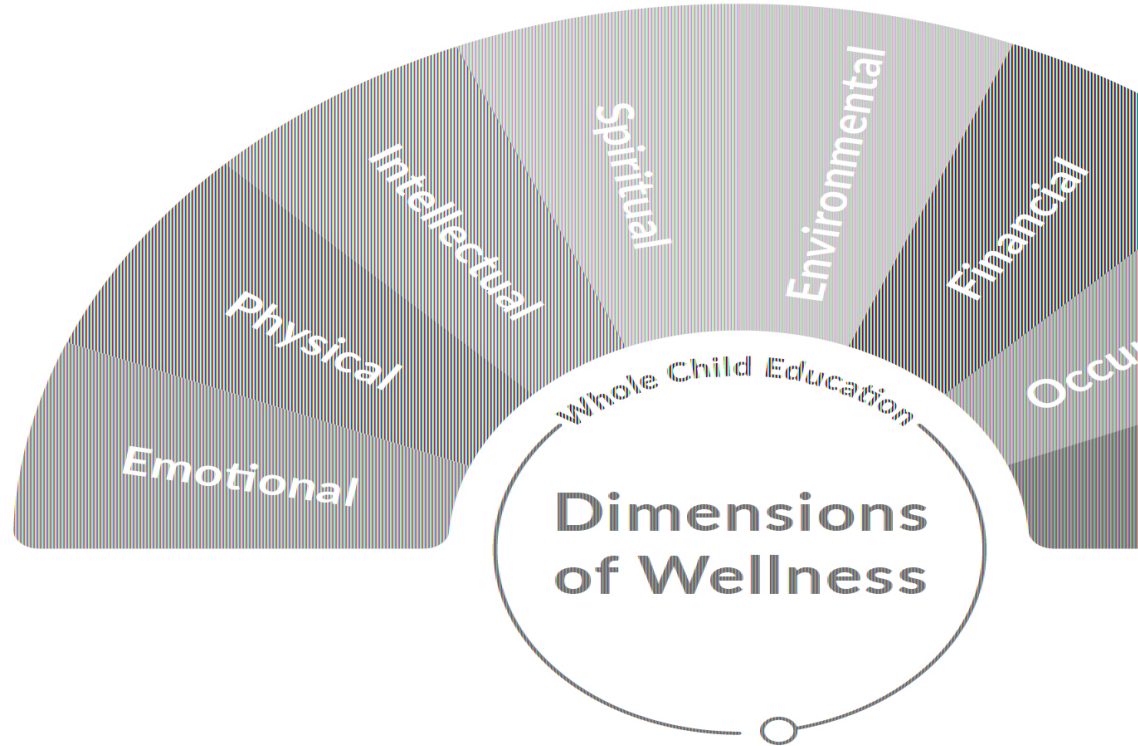


41%

of educators feel that their school has the  
resources necessary to support **mental** health



# The 8 Dimensions of Wellness



# Deep Dive: The 8 Dimensions Of Wellness

## Emotional

Understanding your feelings and coping with stress in healthy and effective ways

## Physical

Maintaining a healthy body and seeking help when needed. Includes getting enough sleep, eating nourishing foods, exercise, and routine healthcare maintenance.

## Intellectual

Having an open mind when you encounter new ideas and continuing to expand your knowledge. It encourages active participation in scholastic, cultural and community activities

## Spiritual

A set of values that help you seek meaning and purpose. Spirituality can be represented in many ways, for example, through relaxation or religion.

## Environmental

Living a lifestyle that is respectful of our surroundings. To live in harmony with the Earth by taking action to protect it. Environmental well-being promotes interaction with nature and your personal environment.

## Financial

The overall financial health of an individual. Includes learning how to successfully manage financial expenses.

## Occupational

Enjoying your occupational endeavors, feeling hopeful about occupational prospects, and appreciating your contributions

## Social

Helps you perform social roles effectively and comfortably, and create a support network. Allows you to not only develop encouraging relationships with peers, but also intimate relationships with romantic partners

# The Dimensions of EVERFI Courses

## Emotional

Mental Wellness Basics,  
The Compassion Project,  
Vault,  
Ignition  
Honor Code,  
Character Playbook, AlcoholEdu,  
Prescription Drug Safety

## Physical

Healthier Me: ES, MS, HS  
Mental Wellness Basics  
Future Goals  
AlcoholEdu  
Prescription Drug Safety

## Intellectual

WORD Force, Future Goals,  
Summer Slugger, Healthier Me:  
MS, Endeavor STEM, Future  
Smart, Venture, Mental  
Wellness Basics, Character  
Playbook, 306

## Spiritual

The Compassion Project  
Mental Wellness Basics  
Honor Code  
Future Smart  
306

## Environmental

WORD Force  
The Compassion Project  
Ignition  
Honor Code  
Mental Wellness Basics  
Character Playbook

## Financial

Vault  
Future Smart  
Venture  
Keys To Your Future  
Marketplaces

## Occupational

Future Goals  
Endeavor STEM  
Future Smart  
Venture  
Keys To Your Future  
Marketplaces

## Social

Mental Wellness Basics  
The Compassion Project  
Ignition  
Honor Code  
Character Playbook  
AlcoholEdu  
Prescription Drug Safety  
306

# Using Your Data Effectively

**Program  
Participation**

*Who Did We Reach?*

**Program  
Results**

*Was it Effective?*

**Community  
Climate**

*What Do We Do Next?*

Learner Access



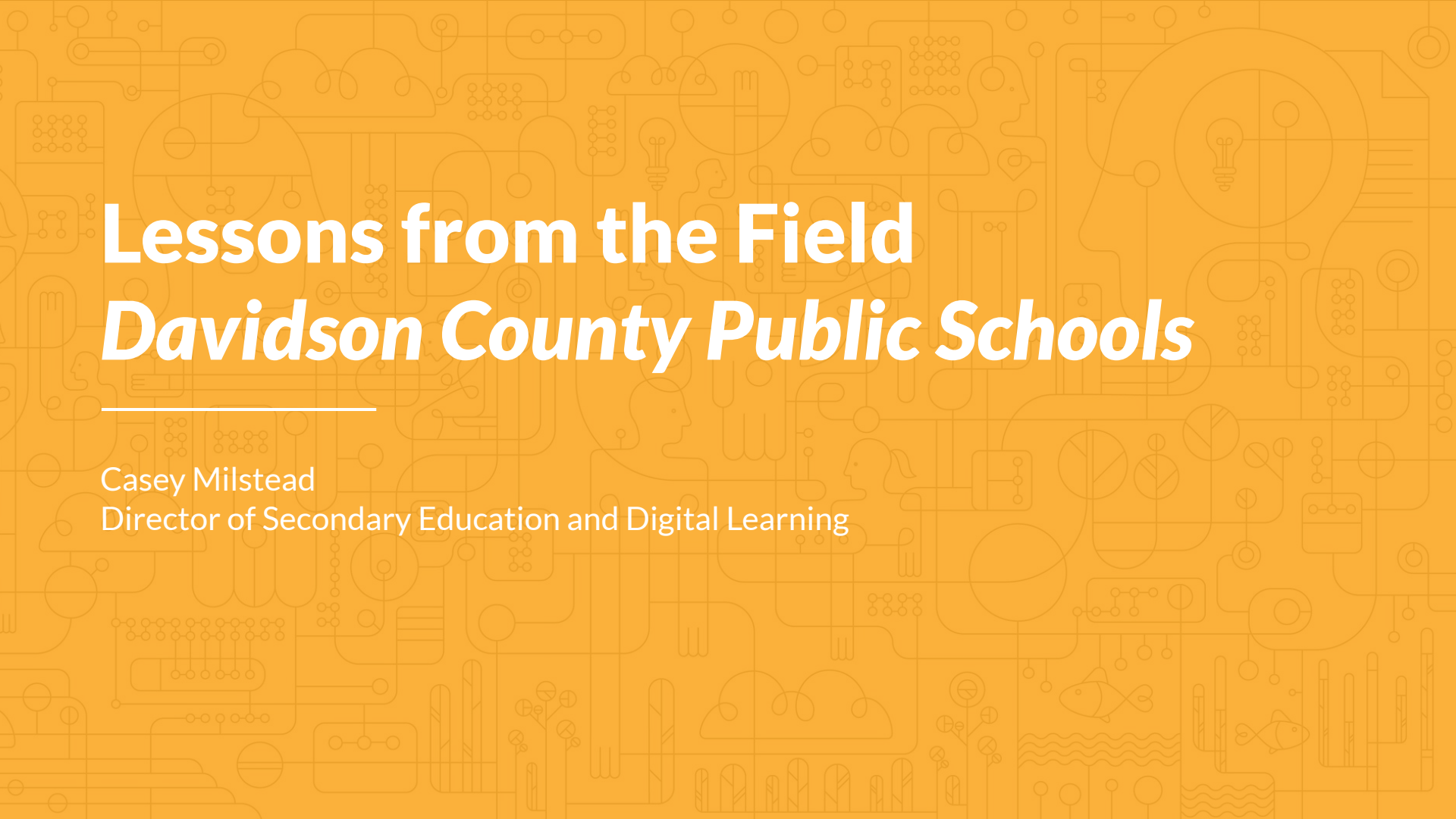
Pre-  
Survey

Course

Post-  
Survey



Impact Reports Delivered



# Lessons from the Field

## *Davidson County Public Schools*

---

Casey Milstead  
Director of Secondary Education and Digital Learning

# Davidson County Schools



The **vision** of  
*Davidson County Schools*  
is to **prepare** students to enter the  
world **READY** to **NAVIGATE**  
*challenges* and **CONSTRUCT**  
*successes.*

## *Our Schools...*

Elementary (Grades PK-5).....	18
Middle (Grades 6-8).....	7
High (Grades 9-12).....	10
Special Needs (K-12).....	1

## *Our Students*

Pk3,PK4.....	272
Elementary (Grades K-5).....	8,124
Middle (Grades 6-8).....	4,483
High (Grades 9-12).....	5,931
Super Seniors.....	15
<hr/>	
American Indian.....	<1%
Asian.....	<1%
Hispanic.....	9.9%
Black.....	3.7%
White.....	81.7%
Pacific Islander.....	<1%
Multiracial.....	3.2%



# Whole Child Tenets

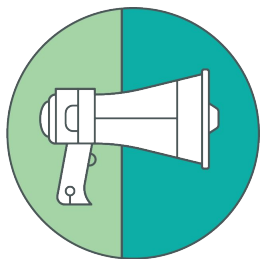
- Each student enters school healthy and learns about and practices a healthy lifestyle.
- Each student learns in an environment that is physically and emotionally safe for students & adults.
- Each student is actively engaged in learning and is connected to the school and broader community.
- Each student has access to personalized learning and is supported by qualified, caring adults.
- Each student is challenged academically and prepared for success in college or further study and for employment and participation in a global environment.



Source: [Whole Child NC](#)

# EVERFI in Davidson County Schools

A look at your overall 2019-2020 Data



**17**

of 21 resources  
used this year



**14**

schools  
used an EVERFI  
resource



**73**

teachers  
used an EVERFI  
resource



**7,407**

students  
learned critical  
skills

# Our EVERFI Why

- District focus on Whole Child Approach
- Implementation of a core SEL curriculum (Sanford Harmony) in K-5; need for core curriculum for secondary
- In the spring of every other year, NC Healthy Schools implements a statewide Youth Risk Behavior Survey (YRBS). Topics include violence, personal safety, physical activity, nutrition, mental health, tobacco, drugs and alcohol, protective factors and sexual behavior questions. Many concerns emerged around this data.
- Feedback for the need to provide more accountability and strategic approach for teaching health curriculum in grades 6-9

# Teacher Buy-In

Grade	Standards Alignment	Everfi Module	Time (Not Necess. One Sitting)
6	6.MEH.3, 6.ICR.1, 6.ICR.2	<a href="#">Ignition: Digital Wellness/Safety</a>	3 hrs
6	6.PCH.2, 6.NPA.1, 6.NPA.2, 6.NPA.3	<a href="#">Healthier Me (Nutrition)</a>	20-25 mins
7	7.MEH.1, 7.ICR.1	<a href="#">Character Playbook</a>	2-3 hrs
8	8. MEH.1, 8.MEH.2, 8.MEH.3, 8.ICR.1	<a href="#">Mental Wellness Basics</a>	40-50 mins
8	8.ICR.1, 8.MEH.2, 8.MEH.3	<a href="#">Honor Code--Bullying Prevention</a>	45 mins
9	9.ATOD.1	<a href="#">Prescription Drug Safety</a>	30-45 mins
9	9.ATOD.1, 9.ATOD.2	<a href="#">AlcoholEDU</a>	2-3 hrs
9	9.MEH.1, 9.MEH.2, 9.ICR.1	<a href="#">Ignition: Digital Wellness/Safety</a>	3 hrs
MEH	Mental and Emotional Health		
PCH	Personal and Consumer Health		
ICR	Interpersonal Communications and Relationships		
NPA	Nutrition and Physical Activity		
ATOD	Alcohol, Tobacco, and Other Drugs		

# Our Results: SEL

## Character Playbook

Usage	2018-2019	2019-2020
Schools	-	9
Teachers	-	25
Students	-	1,663

### Student Learning Objectives

■ Average Pre-Assessment Scores ■ Average Post-Assessment Scores

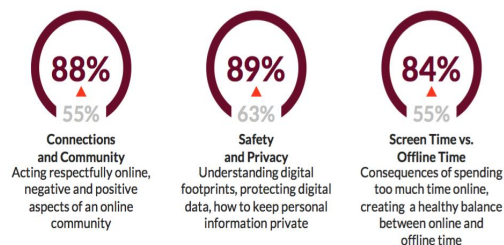


## Ignition: Digital Wellness & Safety

Usage	2018-2019	2019-2020
Schools	-	15
Teachers	-	44
Students	-	2,754

### Student Learning Objectives

■ Average Pre-Assessment Scores ■ Average Post-Assessment Scores



## Honor Code: Beyond Bullying

Usage	2018-2019	2019-2020
Schools	-	8
Teachers	-	21
Students	-	1,137

### Student Learning Objectives

■ Average Pre-Assessment Scores ■ Average Post-Assessment Scores



# Our Results: Health and Wellness

## Healthier Me: Nutrition & Wellness

Usage	2018-2019
Schools	-
Teachers	-
Students	-

### Student Learning Objectives

From state curriculum standards

Average Pre-Assessment Scores Average Post-Assessment Scores

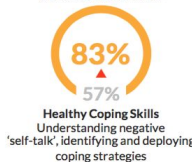


## Mental Wellness Basics

Usage	2018-2019
Schools	-
Teachers	-
Students	-

### Student Learning Objectives

Average Pre-Assessment Scores Average Post-Assessment Scores



Understand  
Warning signs  
treatments  
health

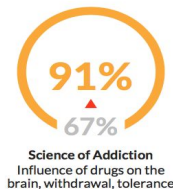
See  
Comb  
consequenc  
help, tre

## Prescription Drug Safety

Usage	2018-2019
Schools	1
Teachers	1
Students	10

### Student Learning Objectives

Average Pre-Assessment Scores Average Post-Assessment Scores

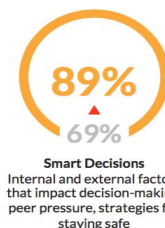
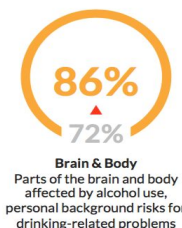


## AlcoholEdu for High School

Usage	2018-2019	2019-2020
Schools	-	7
Teachers	-	20
Students	-	1,059

### Student Learning Objectives

Average Pre-Assessment Scores Average Post-Assessment Scores



## Poll Question 2

Where do data informed decisions have the biggest impact?

- Test scores
- Instructional practices
- Planning practices
- Culture and Climate
- Other



# Lessons From the Field

## *Hillsborough Public Schools*

---

Ashlee Cappucci

Supervisor of K-12 Physical Education, Health, and Dance



# Hillsborough County Public Schools



## Student Demographics



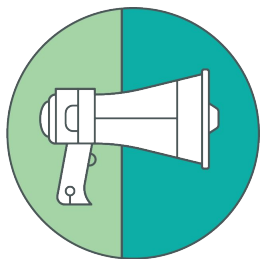
7th largest school district in the nation with nearly 224,000 students.

Hispanic .....37.1%  
White .....32.9%  
Black .....21.0%  
Multi-Racial .....4.6%  
Asian .....4.1%  
American Indian .....0.2%  
Pacific Islander .....0.2%

Economically Disadvantaged .....59.0%  
Exceptional Student Education .....14.4%  
English Language Learners .....11.1%  
  
Gifted .....4.6%  
Homeless .....0.9%  
Migrant .....0.8%

# EVERFI in Hillsborough Public Schools

A look at your overall 2019-2020 Data



**21**

of 21 resources  
used this year



**156**

schools  
used an EVERFI  
resource



**905**

teachers  
used an EVERFI  
resource



**63,718**

students  
learned critical  
skills

# How Does EVERFI Data Enhance Our District?

01	Connects to our strategic plan	<ul style="list-style-type: none"><li>• Student learning</li><li>• Culture &amp; Relationships</li></ul>
02	Included in our “Healthy Schools” survey	<ul style="list-style-type: none"><li>• We recognize schools who are bronze, silver, and gold based on survey results</li><li>• The district has received gold for two consecutive years</li></ul>
03	Helps us measure areas of growth connected to our YRBS data	<ul style="list-style-type: none"><li>• Youth Risk Behavior Survey</li><li>• 9-12 grade students surveyed</li><li>• occurs every other year</li></ul>
04	Provides us with learning gains	<ul style="list-style-type: none"><li>• specific to state required instruction</li><li>• knowledge and skills gained (state standards)</li><li>• enhancement to existing curriculum</li></ul>
05	Partnership enhancements	<ul style="list-style-type: none"><li>• allows us to work with local partners to determine enhancements to their programs</li></ul>

# Student Learning Data

## Health and Wellness

### Prescription Drug Safety

Usage	2018-2019	2019-2020
Schools	15	34
Teachers	40	491
Students	3,174	35,058

### Student Learning Objectives

■ Average Pre-Assessment Scores    ■ Average Post-Assessment Scores



# Culture and Relationships Data



Our district utilized EVERFI to connect to our partnership programs and share the data with partners to improve their programs overtime



# Lessons from the Field

## *Saint Paul Public Schools*

---

Rebecca Biel  
Social Studies Supervisor, K-12



<u>37,000 Students</u>	
American Indian	1%
Asian	31%
Black	26%
Hispanic	14%
White	21%
ELL Services	29%
FRPL	66%
Home Language other than English	47%



K-5
42
Schools

K-8
5
Schools

6-8
4
Schools

6-12
4
Schools

9-12
5
Schools

ALC
4
Schools

# Saint Paul Public Schools, Saint Paul MN

- **Where SPPS and EVERFI have been**
  - Secondary Social Studies has used Financial Literacy modules since 2012
  - embedded in high school Economics course
- **Where SPPS and EVERFI are now**
  - SPPS Achieves Strategic Plan includes SEL, middle school model
  - Health Department and Middle School Advisory beginning to use SEL and other finance modules
- **Where SPPS and EVERFI are going**
  - Strategically using SEL modules in elementary and middle school Health
  - Strategically using Venture, Vault and FutureSmart in middle school advisory
- **Why EVERFI is possible in SPPS**
  - Programs sponsored by banks and teams
  - iPads, single sign on with Clever app
  - Customer Service from EVERFI



# Using the Impact Reports

- Inform “up”
  - what Social Studies and middle school model are doing for financial literacy
  - what Health is doing for SEL
- Gap Analysis
  - what schools are embedding modules
  - strategic supports for schools struggling to embed modules

## EVERFI in Saint Paul Public Schools

A look at your overall 2019-2020 usage:



19

of 21 resources  
used this year



22

schools  
used an EVERFI resource



92

teachers  
used an EVERFI resource



3,973

students  
learned critical skills

		'19-'20 Schools	'19-'20 Teachers	'19-'20 Students	'18-'19 Schools
Financial Education	Vault: Understanding Money (Grades 4-6)	3	3	47	3
	FutureSmart: Middle School Financial Literacy (Grades 6-8)	1	1	10	4
	Venture: Entrepreneurial Expedition (Grades 7-10)	4	4	57	2
	EVERFI: High School Financial Literacy (Grades 9-12)	12	38	1,360	10
	Marketplaces: Investing Basics (Grades 9-12)	2	4	49	-
Social-Emotional Learning	The Compassion Project: Empathy and Compassion (Grades 2-4)	-	-	-	1
	Ignition: Digital Wellness and Safety (Grades 6-8)	7	28	570	2
	Character Playbook: Character Education (Grades 7-9)	8	10	747	9
	Honor Code: Beyond Bullying (Grades 8-10)	6	8	294	1
	306: African American History (Grades 9-12)	2	2	8	1

## EVERFI: High School Financial Literacy

Usage	2018-2019	2019-2020
Schools	10	12
Teachers	21	38
Students	1,009	1,360

### Student Learning Objectives

■ Average Pre-Assessment Scores    ■ Average Post-Assessment Scores



**Banking Basics**  
Checking and saving accounts,  
understanding bank statements



**Budgeting**  
Spending vs. saving, reasons to  
budget, how to build a budget

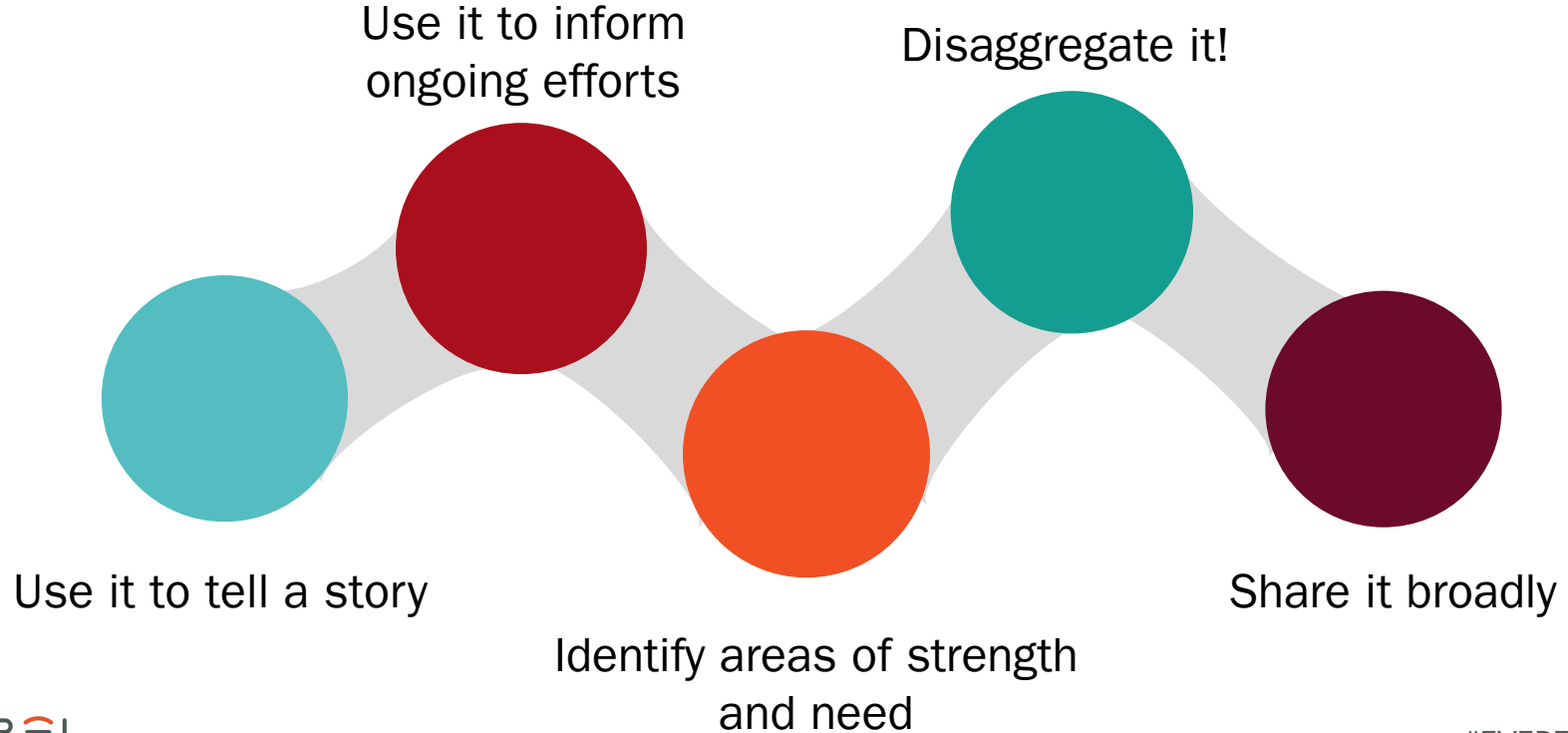


**Financing Higher Education**  
Comparing higher education options,  
preparing financial aid documents



**Credit and Debt**  
Comparing credit card features,  
understanding terms of loans

# Making The Most of Your Data

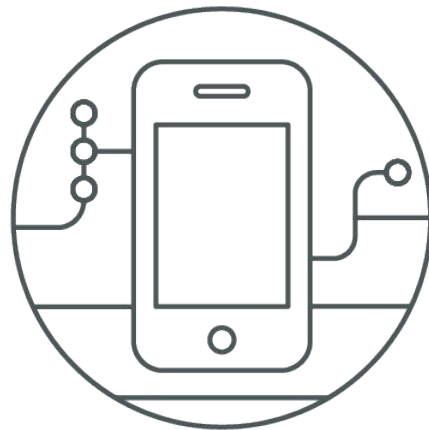


---

# Final Reflection

How do you envision digital resources like EVERFI supporting schools during this upcoming school year?

What advice would you give to your colleagues as they unpack EVERFI's impact reports or other data sources as they make choices and decisions for 2020-2021?





Q&A

---



# Support from EVERFI

---

# EVERFI Resource Offerings & Updates

## Vault **\*NEW\***

Updating our Elementary  
Financial Literacy Resource

### Grades: 4-6

- Responsible Decision Making
- Employment & Income
- Spending & Saving
- Credit & Debt
- Building Wealth

## Sustainability

### Upper Elementary and Middle School

- Cause and Effect
- Biodiversity
- Personal & Social Responsibility

## Antisemitism Prevention

### Grades: 9-12



- Define Antisemitism
- Past & Present-Day Antisemitism
- Connections to Other Forms of Discrimination

## Vaping Prevention



### High School

- Dangers of Teen Vaping
- Refusal Skills & Seeking Help

## Money Moves: Modern Banking and Identity Protection

### Grades: 9-12

- Navigating Online Financial Tools
- Peer-to-Peer Transaction Apps
- Identity Fraud Protection

## Financing Higher Education

### Grades: 11-12

- Value of Higher Education
- Types of Financial Aid
- Understanding Student Loans
- Budgeting Higher Education Costs



Characters from Vault



# Implementation Support



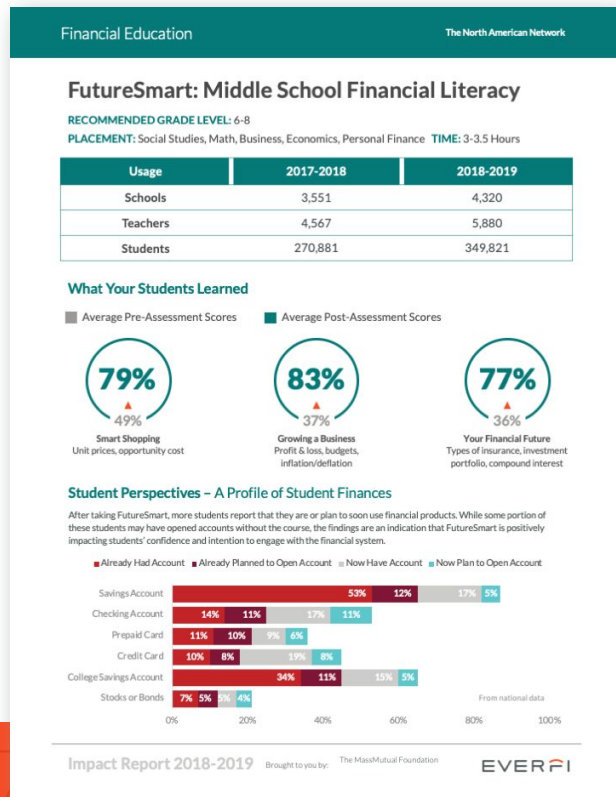
## Your Local Schools Manager

- Support Specific to your District
- Deep Understanding of State Standards Alignment and Regional Usage
- Dedicated Training and Professional Development

# Measurable Impact

Districts receive an annual EVERFI Impact Report sharing overall knowledge gain for each resource implemented.

In addition, teachers can access student assessment data on-demand throughout the year.



Knowledge Gains

Student Perspectives

Learning Hours

Schools Implementing

# Next Steps

## Learn

Visit [everfi.com/k-12/upcoming-events](https://everfi.com/k-12/upcoming-events) for all future webinars and past recordings

## Share

Provide educators with registration and resources information to create an account at [www.everfi.com/k-12](https://www.everfi.com/k-12)

## Connect

Share and connect with other districts or educators on social media - tag [@EVERFIk12](#) and use [#EVERFlempowers](#)

A recording will be emailed to you following the webinar.