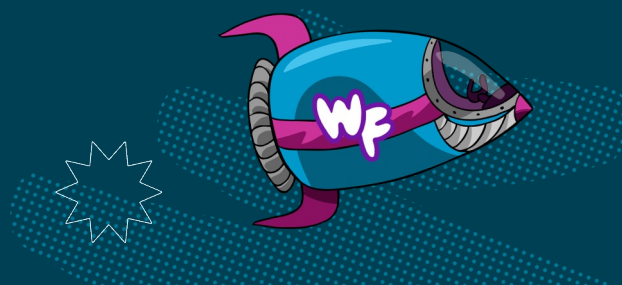


FREE DIGITAL GAMES

# WORD Force®: An Early Literacy Adventure



Developing strong literacy skills at an early age helps students reach their full potential, generating long-term benefits like lower risk of grade retention, increased graduation rates, and improved earning power later in life. As the commander of the WORD Force, a motley group of superheroes, students will develop a strong foundation in key beginning reading skills. The course was recently refreshed with direct instruction videos, game onboarding, level-specific interventions for students who need more guidance in the course, an eBook library equipped with a read-to-me feature, and adaptive pathing to personalize the learning experience for all students.

**WORD Force** games and resources incorporate practice in skills promoted by the science of reading: phonemic awareness, phonics, vocabulary, reading fluency, and reading comprehension. The embedded instructional support and developmental scope and sequence in **WORD Force** align with how children learn literacy skills best: through explicit, systematic instruction.<sup>1</sup>



WORD Force: An Early Literacy Adventure

**GRADE LEVEL:**  
K-2

**CURRICULUM FIT:**  
Reading and ELA

**LENGTH:**  
15 digital games (5 levels each, 10 min per level) with up to 6 hr of offline learning

**STANDARDS ALIGNMENT:**  
CCSS ELA K-12 and State-Based English Language Arts Standards

**EFFICACY:**  
WORD Force has been independently validated to meet ESSA Level III, which demonstrates that usage of the digital course showed a positive, statistically significant relationship with students' academic outcomes (i.e., early literacy skills).

Learn more at [everfi.com/research](https://everfi.com/research)



## Free Digital Platform & Support



Self-guided, interactive digital lessons with real-world scenarios



Offline lessons & resources to bring the digital lessons to life



Built-in student assessments with automatic grading



Single sign-on (SSO) available to streamline student registration

**Clever** -and- **ClassLink**

EVERFI®



Regional team to support you every step of the way

## Skill Focus Areas



PHONOLOGICAL AWARENESS



LETTER-SOUND / LETTER NAME MATCHING



WORD BUILDING



VOCABULARY



READING FLUENCY



READING COMPREHENSION



**MEASURABLE IMPACT**

Evaluate learning gains with pre- and post-game assessment questions and real-time score reporting.

# Build a Strong Foundation in Literacy for Your Students with Evidence-Based Curriculum



I used **WORD Force** this year to help my students with reinforcing phonics. They enjoyed and bragged every time they got to open a new area. Even my high-level students not only enjoyed it but got a better understanding with larger words

—**Elementary School Teacher**, Texas

Interactive games covering focus areas like:



## Phonological Awareness

Students will gain confidence in their ability to identify and manipulate sound structures (e.g., rhyme, individual speech sounds) in spoken words.



## Letter-Sound / Letter Name Matching

Students will match printed consonants and vowels, consonant digraphs (e.g., ch), and blends (e.g., sk) with their corresponding speech sound(s).



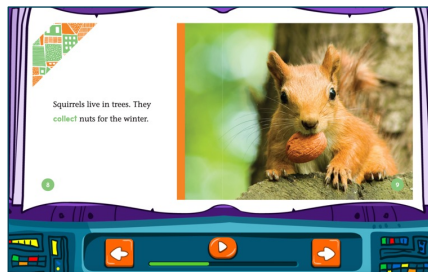
## Word Building

Students will build phonetically regular and irregular words at the onset-rime (e.g., r+ake = rake) and letter (e.g., c+a+t = cat) levels that include short and long vowel sounds, digraphs (e.g., ea, ck), diphthongs (e.g., igh), and consonant blends (e.g., fr).



## Vocabulary

Students will develop automaticity in their ability to decode, recognize, and use low and high frequency phonetically regular and irregular words, which will support vocabulary growth.



## Reading Fluency

Students have access to interactive, informational text eBooks about a variety of topics (e.g. STEM) that feature diverse populations with read-aloud capability that facilitate vocabulary expansion and reading fluency development.



## Reading Comprehension

Students will use knowledge of phonics, grammar, sentence structure, vocabulary, and reading fluency to facilitate text comprehension.



This course is a part of  
**EVERFI's growing content library**

Discover courses covering topics like careers, understanding money, exercise, hygiene, nutrition, compassion, empathy, and mindfulness.



**EVERFI®**

**Ready to start?**

Register now at  
[everfi.com/newteacher](https://everfi.com/newteacher)



EVERFI empowers educators to bring real-world learning into the classroom and equip students with the skills they need for success—now and in the future.

(800) 945-2316