

SCHOOL YEAR 2025–26

# Planning Your Scholarship Application



Explore some of the top scholarship opportunities available this school year by scanning the QR code or visiting

[everfi.com/scholarships](https://everfi.com/scholarships)

“

The Accounting+ scholarship will help me achieve my career goals as I'll use it to fund my academic and professional pursuits. I am so incredibly grateful for this opportunity and all I've learned in the process.

—Past Scholarship Winner, California

## Your Scholarship Deadline:

After reviewing available scholarships with your teacher, add deadline here to help you stay organized.

My Deadline:



## Scholarship Application Checklist:

1



### LEARN

Depending on the scholarship, complete one or more digital lesson from a select Everfi course.

- ☐ Create your Everfi account
- ☐ Complete the required Everfi lesson(s) for your scholarship

2



### WRITE

Construct an essay in response to a given prompt. Essays are typically 300–500 word in length.

- ☐ Brainstorm your essay on page #2 of this worksheet
- ☐ Draft your essay on page #3

3



### SUBMIT

Complete a brief application form with contact information, school details, and your typed essay.

- ☐ Go to [everfi.com/scholarships](https://everfi.com/scholarships)
- ☐ Find your application, complete the form, and type your essay



# Scholarship Application Planning



Directions: Before you start brainstorming, answer the following questions.

What is the name of the scholarship you're applying to?	
Which Everfi digital course is required?	
What lessons did you complete for this application?	
What is the essay question on the scholarship application?	

## Brainstorm ideas for your essay:

## Key components to a strong personal essay:

### PERSONAL

Relate it to **your** life. Many scholarships have hundreds or thousands of applications. Draw on your personal experience—what would make your essay stand out in this year's application pool? What is unique about you?

### INFORMED

Show what you know. A strong essay will relate the online Everfi lesson to your own life. How can you apply what you learned to your decisions and actions now and in the future? Reference key vocabulary words!

### PROFESSIONAL

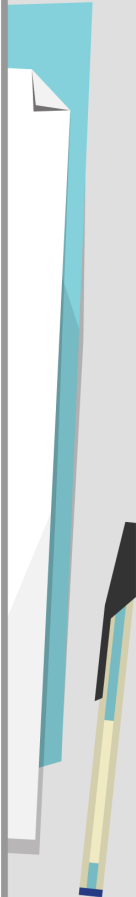
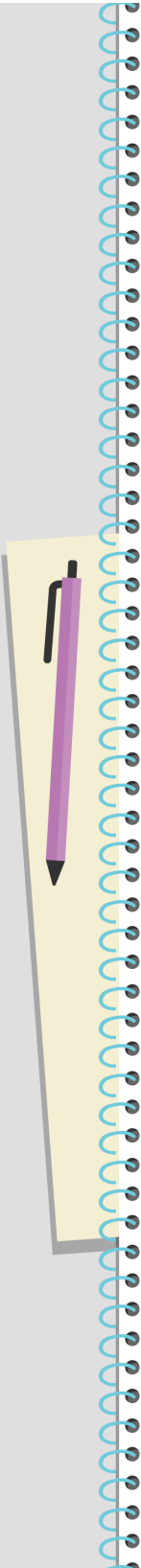
You should write in complete sentences, checking your grammar and spelling. Consider sharing your drafted essay with your teacher or a peer to proofread it before you submit your final essay.

# Draft Your Scholarship Application Essay



Directions: Use these next two pages to draft your essay after you have identified the scholarship you are applying to, completed the required Everfi digital lesson(s), and brainstormed your essay.

A large area for writing the essay, consisting of 25 horizontal blue lines on a white background.



Lined area for writing the draft.

